

MEETING REPORT

Open Access



# Influenza epidemiology and influenza vaccine effectiveness during the 2014–2015 season: annual report from the Global Influenza Hospital Surveillance Network

Joan Puig-Barberà<sup>1\*</sup>, Elena Burtseva<sup>2</sup>, Hongjie Yu<sup>3</sup>, Benjamin J. Cowling<sup>4</sup>, Selim Badur<sup>5</sup>, Jan Kyncl<sup>6</sup>, Anna Somnina<sup>7</sup> and on behalf of the GIHSN

From GIHSN Annual Meeting 2015  
Annecy, France. 19-20 October 2015

## Abstract

The Global Influenza Hospital Surveillance Network (GIHSN) has established a prospective, active surveillance, hospital-based epidemiological study to collect epidemiological and virological data for the Northern and Southern Hemispheres over several consecutive seasons. It focuses exclusively on severe cases of influenza requiring hospitalization. A standard protocol is shared between sites allowing comparison and pooling of results. During the 2014–2015 influenza season, the GIHSN included seven coordinating sites from six countries (St. Petersburg and Moscow, Russian Federation; Prague, Czech Republic; Istanbul, Turkey; Beijing, China; Valencia, Spain; and Rio de Janeiro, Brazil). Here, we present the detailed epidemiological and influenza vaccine effectiveness findings for the Northern Hemisphere 2014–2015 influenza season.

**Keywords:** Influenza, Virus, Surveillance, Vaccine, Hospitalization, Epidemiological study

## Introduction

Every year, between 5 % and 10 % of adults and 20 – 30 % of children have symptomatic influenza illness [1, 2], and 3 to 5 million individuals suffer from severe influenza, leading to 250,000 to 500,000 deaths [2–4]. Influenza illness can result in hospitalization and death, mainly among high-risk groups but also in a substantial proportion of previously healthy individuals [5]. In recent years, especially after the 2009 pandemic season, influenza surveillance has been expanded, as recommended by the World Health Organization (WHO), to include additional epidemiological data [6].

The Global Influenza Hospital Surveillance Network (GIHSN) is an international public-private collaboration

initiated in 2012 by Sanofi Pasteur and the Fundación para el Fomento de la Investigación Sanitaria y Biomédica de la Comunitat Valenciana (FISABIO), a regional public health institution in Valencia, Spain. The aim of the GIHSN is to improve understanding of influenza epidemiology to better inform public health policy decisions. It is the first global network focusing exclusively on severe cases of influenza requiring hospitalization. The GIHSN runs a prospective, active surveillance, hospital-based epidemiological study to collect epidemiological and virological data for the Northern and Southern Hemispheres over several consecutive seasons. A standardised protocol and standard operating procedures are shared between sites allowing comparison and pooling of results [7]. The GIHSN is coordinated by FISABIO and is made up of several country sites affiliated with national health authorities. Each site coordinates several hospitals in its region. The network currently includes 27 hospitals coordinated by 7

\* Correspondence: puig\_joa@gva.es

<sup>1</sup>Foundation for the Promotion of Health and Biomedical Research in the Valencia Region FISABIO – Public Health, Avda Catalunya 21, 46020 Valencia, Spain

Full list of author information is available at the end of the article



sites in 6 countries (St. Petersburg and Moscow, Russian Federation; Prague, Czech Republic; Istanbul, Turkey; Beijing, China; Valencia, Spain; and Rio de Janeiro, Brazil).

The surveillance data collected by the GIHSN are used to describe the circulating strains related to severe disease, estimate the burden of severe influenza disease, and evaluate the benefit of influenza vaccination to prevent severe disease. Results have been published from the network's first two seasons, 2012–2013 [5, 8] and 2013–2014 [9]. In this report, we describe the influenza epidemiology and vaccine effectiveness results from the GIHSN during the 2014–2015 influenza season. Complete data from the Southern Hemisphere was not available at the time of the meeting or during analysis and writing, so only data provided by sites in the Northern hemisphere during the 2014–2015 season are presented.

**Methods**

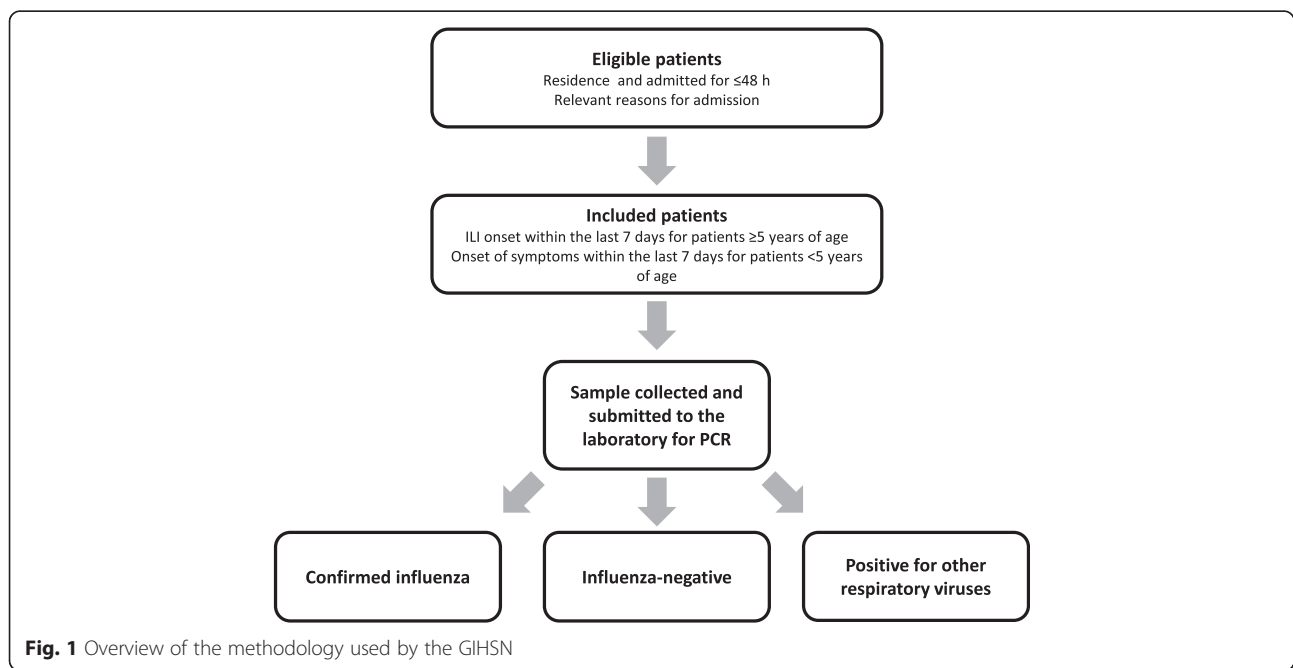
**Summary of overall methodology**

As described in detail elsewhere [7], patients admitted in the participating hospitals are included, after written consent, if they are residents in the predefined hospital's catchment area, present with an acute illness possibly related to influenza, are not institutionalised, and the onset of symptoms was within 7 days of admission. Swabs are collected from patients meeting the inclusion criteria and tested by reverse transcription-polymerase chain reaction (RT-PCR) for influenza (Fig. 1). Influenza-positive samples are sub-typed by RT-PCR to identify A(H1N1)pdm09, A(H3N2), B/Yamagata-lineage, and B/Victoria-lineage strains. Vaccine effectiveness is assessed using a test-negative design in which vaccine coverage is compared

between admissions with and without laboratory-confirmed influenza.

**Epidemiological analysis**

Epidemiological and virological data were collected from 7 coordinating sites and a total of 27 hospitals in 6 countries (Additional file 1). Briefly, eligible admissions included non-institutionalised residents in the predefined catchment areas of the participating hospitals, hospitalised in the last 48 h, and with presenting illness potentially associated with influenza (Additional file 2 and Additional file 3). The study activities were performed over influenza circulation periods defined using pre-specified criteria (Additional file 3). Nasopharyngeal swabs (all subjects), pharyngeal swabs (subjects ≥14 years) or nasal swabs (subjects <14 years) were tested by semi-quantitative RT-PCR for influenza A (subtypes H3 and H1pdm09) and B (Yamagata and Victoria lineages). The distribution of hospital admission according to RT-PCR result was described by site and risk group. Secondary outcomes included hospital admissions by subtype for influenza A(H1N1)pdm09, A(H3N2), and B-lineage, by site and risk group. The significance of differences among groups or categories was estimated by the likelihood ratio test, *t*-test, or nonparametric tests as required. A *P*-value <0.05 was considered to indicate statistical significance. To describe the major determinants for admission with influenza (vs. influenza-negative admission), a stepwise logistic regression model was fitted by including all risk factors at *P* < 0.2. Adjusted odds ratios (aORs) for RT-PCR-positive vs. RT-PCR-negative admissions in the presence of major risk factors of interest were



estimated by multivariate logistic regression using minimal sufficient adjustment sets of covariates identified as confounders by causal diagrams. To account for the possible effect of study site, data were fitted to a random effects logistic regression model including site as a cluster variable. Likelihood ratio tests were used to check for the potential effect of clustering by site [10]. The adjusted effect of site in the probability of influenza with admission was estimated. Heterogeneity in the effects of risk factors by influenza strain and site were quantified using the  $I^2$  test. Heterogeneity was defined as an  $I^2 > 50\%$  [11, 12]. Further details are provided elsewhere [5, 7, 8].

### Influenza vaccine effectiveness analysis

Influenza vaccine effectiveness (IVE) was estimated as  $(1 - OR) \times 100$ , where the OR compared the vaccine coverage rate between influenza-positive and influenza-negative patients. Patients were considered vaccinated if they had received the current season's influenza vaccine at least 14 days before symptom onset. The types of vaccines used at each site are summarised in Additional file 4. IVE overall (irrespective of vaccine type) was determined in patients who had been swabbed within 7 days of the onset of ILI symptoms. Records for which outcome, exposure, or confounding variables were missing were excluded from the multivariate IVE analyses. The adjusted IVE was estimated by logistic regression using a random effects model with study site as a shared parameter for the pooled analysis and including week of symptom onset as a continuous variable, and age group, sex, hospitalisation in the previous 12 months, presence of chronic conditions, and smoking habits as potential confounding factors. A  $P$ -value  $< 0.05$  was considered to indicate statistical significance. Heterogeneity in IVE estimates was assessed using the  $I^2$ . Potential sources of heterogeneity, including coordinating site, age, and influenza subgroup were examined in ad-hoc analyses. Heterogeneity was defined as low if  $I^2$  statistic  $< 25\%$ , moderate if  $25 - 49\%$ , and high if  $\geq 50\%$ . Further details of the methodology are described elsewhere [8].

## Results

### Epidemiology of influenza in the GIHSN during the 2014–2015 influenza season

#### Patients included in the epidemiology analysis

Twenty thousand five hundred fifty-one eligible admissions were identified between November 16, 2014 and May 23, 2015, of which 9614 met the selection criteria and were included (Table 1). Based on RT-PCR, 2177 (23 %) were positive for influenza. Major

reasons for exclusion included no ILI symptoms before admission (15 %), previous admission fewer than 30 days from the current episode (13 %), admission more than 7 days after the onset of symptoms (6 %), recruitment outside periods of continuous admissions with influenza (6 %).

### Influenza viruses identified in admissions

In the 2177 included influenza-positive patients, A(H3N2) ( $n = 1243$ ; 57 %) was the most commonly identified type of influenza, followed by B/Yamagata-lineage ( $n = 623$ ; 29 %), A(H1N1)pdm09 ( $n = 121$ ; 6 %), A not subtyped (106; 5 %), B lineage not determined ( $n = 97$ ; 5 %), and B/Victoria-lineage ( $n = 11$ ; 0.5 %) (Table 1 and Fig. 2a and b). Mixed influenza infections were found in 24 cases. Influenza B lineage not determined were considered B/Yamagata-lineage for 39 cases in Turkey and four in Valencia. Due to the mixed circulation of B/Yamagata and B/Victoria lineages in Moscow, this assumption was not applied at that site to cases where B-lineage was not determined.

### The 2014–2015 influenza season at the GIHSN sites

Influenza was detected over a span of 27 weeks, from week 47 of 2014 to week 20 of 2015, with the peak at week 7 of 2015 (Fig. 2). The earliest start of the influenza season was reported in Beijing, where influenza-positive admissions occurred over a span of 23 weeks in two waves, the first due to A(H3N2) and the second due to B/Yamagata-lineage (Fig. 2). The latest influenza-positive admission was in St. Petersburg, where continuous weekly admissions with influenza were observed over a span of 19 weeks.

A(H3N2) was the most frequently detected influenza virus in St. Petersburg (44 % of positives), Czech Republic (56 %), Beijing (60 %), and Valencia (83 %) (Table 1). B/Yamagata-lineage was the second-most frequently detected influenza virus in St. Petersburg (43 %), Czech Republic (27 %), and Beijing (39 %). With the exception of Beijing and Turkey, A(H3N2) and B/Yamagata-lineage co-circulated at all sites (Fig. 2). In Turkey, A(H3N2) accounted for only 8.5 % of positives, and instead, B influenza viruses predominated (55 %), followed by A(H1N1)pdm09 (37 %), with co-circulation of these two viruses (Table 1 and Fig. 2).

### Main characteristics of included patients

Overall, all age groups were represented. Approximately one-third of included admissions were patients less than 5 years of age, one-third were 5 to 64 years of age, and one-third were 65 years of age or older (Table 2). More than half of the included patients were male ( $n = 5417$ ;

**Table 1** Selection of patients and results of RT-PCR

| Category                                                                | St. Petersburg |      | Moscow |      | Czech Republic |      | Turkey |      | Beijing |      | Valencia |      | Total  |      |
|-------------------------------------------------------------------------|----------------|------|--------|------|----------------|------|--------|------|---------|------|----------|------|--------|------|
|                                                                         | n              | %    | n      | %    | n              | %    | n      | %    | n       | %    | n        | %    | n      | %    |
| Screened admissions                                                     | 3164           |      | 1934   |      | 123            |      | 1409   |      | 1425    |      | 12,496   |      | 20,551 |      |
| Exclusion criteria                                                      |                |      |        |      |                |      |        |      |         |      |          |      |        |      |
| Non resident                                                            | 21             | 0.7  | 95     | 4.9  | 12             | 9.8  | 73     | 5.2  | 5       | 0.4  | 50       | 0.4  | 256    | 1.2  |
| Institutionalised                                                       | 14             | 0.4  | 14     | 0.7  | 2              | 1.6  | 17     | 1.2  | 2       | 0.1  | 800      | 6.4  | 849    | 4.1  |
| Previous discharge <30 days                                             | 31             | 1.0  | 51     | 2.6  | 8              | 6.5  | 216    | 15.3 | 13      | 0.9  | 2283     | 18.3 | 2602   | 12.7 |
| Unable to communicate                                                   | 20             | 0.6  | 47     | 2.4  | 2              | 1.6  | 125    | 8.9  | 0       | 0.0  | 782      | 6.3  | 976    | 4.7  |
| Not giving consent                                                      | 100            | 3.2  | 32     | 1.7  | 14             | 11.4 | 47     | 3.3  | 15      | 1.1  | 504      | 4.0  | 712    | 3.5  |
| No ILI symptoms ≥5 years of age                                         | 19             | 0.6  | 25     | 1.3  | 1              | 0.8  | 131    | 9.3  | 18      | 1.3  | 2903     | 23.2 | 3097   | 15.1 |
| Admission within 7 days of symptoms onset                               | 181            | 5.7  | 150    | 7.8  | 4              | 3.3  | 110    | 7.8  | 44      | 3.1  | 745      | 6.0  | 1234   | 6.0  |
| Previous influenza infection                                            | 1              | 0.0  | 0      | 0.0  | 0              | 0.0  | 7      | 0.5  | 0       | 0.0  | 1        | 0.0  | 9      | 0.0  |
| Onset of symptoms to swab >9 days                                       | 0              | 0.0  | 1      | 0.1  | 0              | 0.0  | 2      | 0.1  | 0       | 0.0  | 1        | 0.0  | 4      | 0.0  |
| Sample inadequate                                                       | 0              | 0.0  | 0      | 0.0  | 0              | 0.0  | 0      | 0.0  | 0       | 0.0  | 5        | 0.0  | 5      | 0.0  |
| Sample lost                                                             | 0              | 0.0  | 0      | 0.0  | 0              | 0.0  | 0      | 0.0  | 1       | 0.1  | 1        | 0.0  | 2      | 0.0  |
| Recruited outside periods with continuous influenza positive admissions | 31             | 1.0  | 115    | 5.9  | 1              | 0.8  | 65     | 4.6  | 178     | 12.5 | 764      | 6.1  | 1154   | 5.6  |
| Included with valid laboratory results                                  | 2715           | 85.8 | 1400   | 72.4 | 79             | 64.2 | 614    | 43.6 | 1149    | 80.6 | 3657     | 29.3 | 9614   | 46.8 |
| RT-PCR result                                                           |                |      |        |      |                |      |        |      |         |      |          |      |        |      |
| Influenza negative                                                      | 2113           | 77.8 | 966    | 69.0 | 20             | 25.3 | 543    | 88.4 | 875     | 76.2 | 2920     | 79.8 | 7437   | 77.4 |
| Influenza positive                                                      | 602            | 22.2 | 434    | 31.0 | 59             | 74.7 | 71     | 11.6 | 274     | 23.8 | 737      | 20.2 | 2177   | 22.6 |
| Subtype and lineage <sup>a</sup>                                        |                |      |        |      |                |      |        |      |         |      |          |      |        |      |
| A(H1N1)pdm09                                                            | 47             | 7.8  | 30     | 6.9  | 7              | 11.9 | 26     | 36.6 | 1       | 0.4  | 10       | 1.4  | 121    | 5.6  |
| A(H3N2)                                                                 | 267            | 44.3 | 163    | 37.6 | 33             | 55.9 | 6      | 8.5  | 163     | 59.5 | 611      | 82.9 | 1243   | 57.1 |
| A not subtyped                                                          | 48             | 8.0  | 9      | 2.1  | 2              | 3.3  | 0      | 0.0  | 0       | 0.0  | 47       | 6.4  | 106    | 4.9  |
| B/Yamagata lineage                                                      | 258            | 42.9 | 175    | 40.3 | 16             | 27.1 | 0      | 0.0  | 109     | 39.8 | 65       | 8.8  | 623    | 28.6 |
| B/Victoria lineage                                                      | 0              | 0    | 10     | 2.3  | 0              | 0    | 0      | 0.0  | 1       | 0.4  | 0        | 0.0  | 11     | 0.5  |
| B not subtyped <sup>b</sup>                                             | 0              | 0    | 52     | 12.0 | 2              | 3.4  | 39     | 54.9 | 0       | 0.0  | 4        | 0.5  | 97     | 4.5  |

Abbreviations: ILI, influenza-like disease; RT-PCR, reverse transcriptase-polymerase chain reaction

<sup>a</sup>Because there were 24 mixed infections, each involving two different influenza viruses, the sum by strain may be greater than the number of patients included with lab results. Percentages are reported by total of influenza-positive cases

<sup>b</sup>For Turkey and Valencia, all B not subtyped were assumed to be B/Yamagata lineage based on virus circulation at these sites. This assumption was not applied for Moscow because of a mixed pattern of influenza B circulation

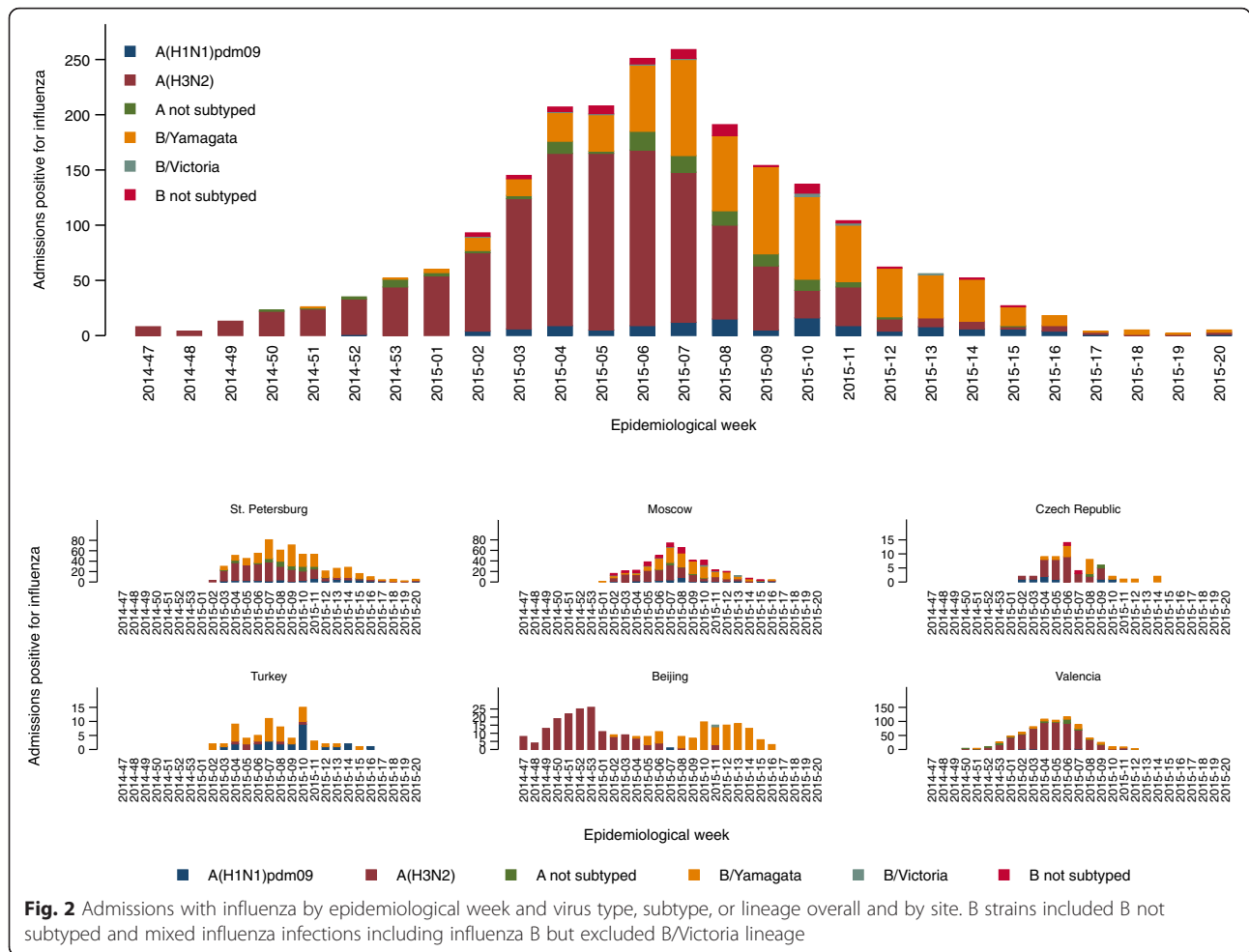
56 %). Most ( $n = 5867$ ; 61 %) did not have an underlying chronic condition, and most ( $n = 6756$ ; 70 %) had not been hospitalised in the 12 months before the current episode. Among the 39 % ( $n = 3747$ ) of admissions in patients with underlying chronic conditions, the most frequent were cardiovascular disease ( $n = 1998$ ; 21 %), chronic respiratory conditions (including chronic obstructive pulmonary disease [COPD;  $n = 1459$ ] and asthma [ $n = 446$ ]; 20 %), diabetes ( $n = 1048$ ; 11 %), and renal disease ( $n = 606$ ; 6 %). Few patients had active neoplasms (3 %), neuromuscular diseases (3 %), autoimmune diseases (2 %), liver disease (2 %), or immunodeficiency (1 %).

Just under half ( $n = 298$ ; 45 %) of the admitted women 15–45 years of age were pregnant. Obese patients represented 17 % ( $n = 1658$ ) of admissions.

Among admissions in adult patients ( $\geq 18$  years;  $n = 5066$ ), 1045 (21 %) were current smokers, 1544 (30 %) were past smokers, and 2477 (49 %) had never smoked. Among elderly patients ( $\geq 65$  years;  $n = 2857$ ), 17 % ( $n = 480$ ) had severe functional impairment as defined by a Barthel index  $< 60$ . Finally, 2013 (21 %) admissions were in patients that had received the current season's influenza vaccine at least 14 days before the onset of symptoms. Overall, swabs were obtained within 4 days after the onset of symptoms onset in 7002 (73 %) of included admissions.

#### Site-related characteristics of included patients

Patients included in St. Petersburg were younger than patients included at other sites (Table 2). The difference



in age of included patients was especially marked when comparing St. Petersburg with the Czech Republic and Valencia. Patients were most frequently young adults in Moscow and the Czech Republic. Ages were homogeneously distributed in Turkey and Beijing ( $P = 0.9480$ ). By contrast, in Valencia most (62 %) admissions were in elderly patients ( $\geq 65$  years).

Patients without comorbidities represented 88 % of admissions in St. Petersburg, 89 % in Moscow, 71 % in Beijing, 37 % in Czech Republic, 30 % in Turkey, and 33 % in Valencia. Of the different chronic conditions, cardiovascular disease, respiratory disease, and diabetes were the most common, and their relative importance at each site corresponded to the proportion of patients with one or more underlying chronic condition.

In Moscow, among admissions in patients with known risk factors for influenza, pregnant women represented the majority of admissions ( $n = 291$ ; 96 %). Obese patients represented 10 – 15 % of admissions in St. Petersburg, Moscow, the Czech Republic, and Beijing, whereas 18 % in Turkey and 26 % in Valencia were obese. The proportion of who

never smoked ranged from 47 – 53 % in adult ( $\geq 18$  years) admissions and was similar across sites ( $p = 0.1520$ ). The overall proportion of current smokers, however, differed, with the highest rate (34 %) in St. Petersburg and Moscow (33 %), followed by Czech Republic (25 %), Beijing (18 %), Valencia (16 %), and Turkey (13 %) ( $p < 0.0001$ ). For elderly adults, functional impairment status was mild or minimal in 83–97 % of included admissions at all sites except Beijing, where 30 % of admissions in elderly patients had moderate to severe functional impairment. Rates of influenza vaccination were below 5 % for all sites except Beijing (11 %) and Valencia (48 %).

### Heterogeneity between sites

The proportion of samples with positive results differed between sites, from as low as 12 % for Turkey to as high as 75 % for the Czech Republic (Table 1;  $p < 0.0001$  by test of homogeneity for equal odds). This difference persisted after excluding pregnant women and excluding the two sites with extreme

**Table 2** Characteristics of included patients overall and by site

| Characteristic                           | St. Petersburg |      | Moscow    |      | Czech Republic |      | Turkey    |      | Beijing  |      | Valencia   |      | Total      |      |
|------------------------------------------|----------------|------|-----------|------|----------------|------|-----------|------|----------|------|------------|------|------------|------|
|                                          | N = 2715       |      | N = 1400  |      | N = 79         |      | N = 614   |      | N = 1149 |      | N = 3657   |      | N = 9614   |      |
|                                          | n              | %    | n         | %    | n              | %    | n         | %    | n        | %    | n          | %    | n          | %    |
| Age in years, median (range)             | 3 (0–94)       |      | 19 (0–90) |      | 51 (19–91)     |      | 12 (0–98) |      | 8 (0–96) |      | 73 (0–106) |      | 21 (0–106) |      |
| Age group                                |                |      |           |      |                |      |           |      |          |      |            |      |            |      |
| 0–1 y                                    | 714            | 26.3 | 137       | 9.8  | 0              | 0.0  | 112       | 18.2 | 76       | 6.6  | 476        | 13.0 | 1515       | 15.8 |
| 2–4 y                                    | 1034           | 38.1 | 371       | 26.5 | 0              | 0.0  | 133       | 21.7 | 403      | 35.1 | 265        | 7.2  | 2206       | 22.9 |
| 5–17 y                                   | 357            | 13.1 | 171       | 12.2 | 0              | 0.0  | 80        | 13.0 | 147      | 12.8 | 72         | 2.0  | 827        | 8.6  |
| 18–49 y                                  | 426            | 15.7 | 632       | 45.1 | 38             | 48.1 | 38        | 6.2  | 106      | 9.2  | 221        | 6.0  | 1461       | 15.2 |
| 50–64 y                                  | 110            | 4.1  | 59        | 4.2  | 14             | 17.7 | 75        | 12.2 | 131      | 11.4 | 359        | 9.8  | 748        | 7.8  |
| 65–74 y                                  | 39             | 1.4  | 13        | 0.9  | 12             | 15.2 | 69        | 11.2 | 93       | 8.1  | 593        | 16.2 | 819        | 8.5  |
| 75–84 y                                  | 31             | 1.1  | 11        | 0.8  | 9              | 11.4 | 80        | 13.0 | 127      | 11.1 | 969        | 26.5 | 1227       | 12.8 |
| ≥85 y                                    | 4              | 0.1  | 6         | 0.4  | 6              | 7.6  | 27        | 4.4  | 66       | 5.7  | 702        | 19.2 | 811        | 8.4  |
| Sex                                      |                |      |           |      |                |      |           |      |          |      |            |      |            |      |
| Male                                     | 1489           | 54.8 | 827       | 59.1 | 40             | 50.6 | 356       | 58.0 | 696      | 60.6 | 2009       | 54.9 | 5417       | 56.3 |
| Female                                   | 1226           | 45.2 | 573       | 40.9 | 39             | 49.4 | 258       | 42.0 | 453      | 39.4 | 1648       | 45.1 | 4197       | 43.7 |
| Chronic conditions                       |                |      |           |      |                |      |           |      |          |      |            |      |            |      |
| 0                                        | 2380           | 87.7 | 1246      | 89.0 | 29             | 36.7 | 182       | 29.6 | 820      | 71.4 | 1210       | 33.1 | 5867       | 61.0 |
| 1                                        | 244            | 9.0  | 116       | 8.3  | 31             | 39.2 | 196       | 31.9 | 233      | 20.3 | 1026       | 28.1 | 1846       | 19.2 |
| >1                                       | 91             | 3.4  | 38        | 2.7  | 19             | 24.1 | 236       | 38.4 | 96       | 8.4  | 1421       | 38.9 | 1901       | 19.8 |
| Previously hospitalised (last 12 months) |                |      |           |      |                |      |           |      |          |      |            |      |            |      |
| No                                       | 1781           | 65.6 | 1123      | 80.2 | 56             | 70.9 | 341       | 55.5 | 964      | 85.1 | 2491       | 68.1 | 6756       | 70.4 |
| Yes                                      | 934            | 34.4 | 277       | 19.8 | 23             | 29.1 | 273       | 44.5 | 169      | 14.9 | 1166       | 31.9 | 2842       | 29.6 |
| Underlying chronic conditions            |                |      |           |      |                |      |           |      |          |      |            |      |            |      |
| Cardiovascular disease                   | 140            | 5.2  | 68        | 4.9  | 29             | 36.7 | 215       | 35.0 | 218      | 19.0 | 1328       | 36.3 | 1998       | 20.8 |
| Chronic obstructive pulmonary disease    | 51             | 1.9  | 19        | 1.4  | 6              | 7.6  | 153       | 24.9 | 137      | 11.9 | 1093       | 29.9 | 1459       | 15.2 |
| Asthma                                   | 60             | 2.2  | 19        | 1.4  | 3              | 3.8  | 74        | 12.1 | 8        | 0.7  | 282        | 7.7  | 446        | 4.6  |
| Immunodeficiency/organ transplant        | 30             | 1.1  | 0         | 0.0  | 3              | 3.8  | 48        | 7.8  | 0        | 0.0  | 25         | 0.7  | 106        | 1.1  |
| Diabetes                                 | 32             | 1.2  | 14        | 1.0  | 12             | 15.2 | 96        | 15.6 | 34       | 3.0  | 860        | 23.5 | 1048       | 10.9 |
| Renal impairment                         | 18             | 0.7  | 26        | 1.9  | 4              | 5.1  | 61        | 9.9  | 12       | 1.0  | 485        | 13.3 | 606        | 6.3  |
| Neuromuscular disease                    | 68             | 2.5  | 15        | 1.1  | 1              | 1.3  | 79        | 12.9 | 12       | 1.0  | 92         | 2.5  | 267        | 2.8  |
| Neoplasm                                 | 7              | 0.3  | 9         | 0.6  | 9              | 11.4 | 79        | 12.9 | 7        | 0.6  | 190        | 5.2  | 301        | 3.1  |
| Cirrhosis/liver disease                  | 34             | 1.3  | 21        | 1.5  | 5              | 6.3  | 19        | 3.1  | 5        | 0.4  | 118        | 3.2  | 202        | 2.1  |
| Autoimmune disease                       | 13             | 0.5  | 14        | 1.0  | 4              | 5.1  | 22        | 3.6  | 0        | 0.0  | 122        | 3.3  | 175        | 1.8  |
| Pregnant (women 15–45 y)                 | 0              | 0.0  | 291       | 95.7 | 1              | 7.1  | 1         | 4.8  | 0        | 0.0  | 5          | 5.7  | 298        | 45.4 |
| Obese (all ages)                         | 263            | 9.7  | 162       | 11.6 | 12             | 15.2 | 109       | 17.8 | 155      | 13.5 | 957        | 26.2 | 1658       | 17.2 |
| Outpatient consultations last 3 months   |                |      |           |      |                |      |           |      |          |      |            |      |            |      |
| 0                                        | 1215           | 44.8 | 492       | 35.1 | 23             | 29.1 | 113       | 18.4 | 4        | 0.3  | 649        | 17.7 | 2496       | 26.0 |
| 1                                        | 895            | 33.0 | 314       | 22.4 | 19             | 24.1 | 100       | 16.3 | 697      | 60.9 | 678        | 18.5 | 2703       | 28.1 |
| >1                                       | 605            | 22.3 | 594       | 42.4 | 37             | 46.8 | 401       | 65.3 | 443      | 38.7 | 2330       | 63.7 | 4410       | 45.9 |
| Smoking habits (patients ≥18 y)          |                |      |           |      |                |      |           |      |          |      |            |      |            |      |
| Never smoker                             | 325            | 53.3 | 345       | 47.9 | 40             | 50.6 | 135       | 46.7 | 269      | 51.4 | 1363       | 47.9 | 2477       | 48.9 |
| Past smoker                              | 76             | 12.5 | 136       | 18.9 | 19             | 24.1 | 117       | 40.5 | 162      | 31   | 1034       | 36.4 | 1544       | 30.5 |
| Current smoker                           | 209            | 34.3 | 240       | 33.3 | 20             | 25.3 | 37        | 12.8 | 92       | 17.6 | 447        | 15.7 | 1045       | 20.6 |



**Table 2** Characteristics of included patients overall and by site (Continued)

| Functional status impairment (Barthel score; patients ≥65 y) |      |      |     |      |    |      |     |      |     |      |      |      |      |      |
|--------------------------------------------------------------|------|------|-----|------|----|------|-----|------|-----|------|------|------|------|------|
| Total (0–15)                                                 | 1    | 1.4  | 0   | 0.0  | 3  | 11.1 | 6   | 3.4  | 23  | 10.0 | 166  | 7.3  | 199  | 7.1  |
| Severe (20–35)                                               | 1    | 1.4  | 0   | 0.0  | 1  | 3.7  | 3   | 1.7  | 19  | 8.3  | 71   | 3.1  | 95   | 3.4  |
| Moderate (40–55)                                             | 1    | 1.4  | 1   | 3.3  | 1  | 3.7  | 6   | 3.4  | 37  | 16.1 | 140  | 6.2  | 186  | 6.6  |
| Mild (60–90)                                                 | 25   | 33.8 | 6   | 20.0 | 9  | 33.3 | 76  | 43.2 | 136 | 59.1 | 414  | 18.3 | 666  | 23.8 |
| Minimal (95–100)                                             | 46   | 62.2 | 23  | 76.7 | 13 | 48.1 | 85  | 48.3 | 15  | 6.5  | 1473 | 65.1 | 1655 | 59.1 |
| Sampling time                                                |      |      |     |      |    |      |     |      |     |      |      |      |      |      |
| 0–2 days                                                     | 1351 | 49.8 | 655 | 46.8 | 20 | 25.3 | 125 | 20.4 | 324 | 28.2 | 896  | 24.5 | 3371 | 35.1 |
| 3–4 days                                                     | 915  | 33.7 | 523 | 37.4 | 26 | 32.9 | 213 | 34.7 | 382 | 33.2 | 1572 | 43.0 | 3631 | 37.8 |
| 5–7 days                                                     | 449  | 16.5 | 221 | 15.8 | 24 | 30.4 | 239 | 38.9 | 358 | 31.2 | 1058 | 28.9 | 2349 | 24.4 |
| 8–9 days                                                     | 0    | 0.0  | 1   | 0.1  | 9  | 11.4 | 37  | 6.0  | 85  | 7.4  | 131  | 3.6  | 263  | 2.7  |
| Influenza vaccination ≥14 days from symptom onset            | 59   | 2.2  | 39  | 2.8  | 1  | 1.3  | 28  | 4.6  | 127 | 11.1 | 1759 | 48.1 | 2013 | 20.9 |

results: proportions with positive results were 22 % for St. Petersburg, 31 % for Moscow, 24 % for Beijing, and 20 % for Valencia ( $p < 0.0014$  by test of homogeneity for equal odds). After excluding pregnant women, however, proportions were homogenous in St. Petersburg, Moscow, and Beijing ( $p < 0.1464$  by test of homogeneity for equal odds). After adjusting for sex, age, comorbidity, previous admissions, time to swab, influenza vaccination, and calendar time, the heterogeneity of aORs for a positive result were similar to the unadjusted results (Additional file 5 and Additional file 6;  $I^2 = 96.4$  %;  $p < 0.0001$ ).

#### Risk of admission with influenza according to age and sex and variability by influenza virus

Influenza positivity was related to age. Overall, influenza-positive admissions tended to be older than influenza-negative admissions (Table 3). Admissions positive for A(H1N1)pdm09 were younger than those negative for influenza, those positive for A(H3N2), and those positive for B/Yamagata-lineage. Also, admissions positive for A(H3N2) were older than influenza-negative admissions, those positives for A(H1N1)pdm09, and those positive for B/Yamagata-lineage (Table 3 and Fig. 3).

After adjusting for sex, occupational class, comorbidity, influenza vaccination, time to swab, and the clustering effect of site, heterogeneity due to strain was significant for admissions in subjects ≥5 years of age due to a decrease in aOR with age for admission with A(H1N1)pdm09 (Table 4 and Additional file 7). After excluding admissions with A(H1N1)pdm09, the aOR for admission with influenza was homogeneous for elderly patients but heterogeneous for patients 5–64 years of age ( $I^2 = 75$ – $77$  %) due to a higher aOR for admissions with B/Yamagata-lineage than for A(H3N2) (Additional file 7).

Female patients had a higher risk than male patients of being influenza-positive (aOR, 1.21 [95 % CI, 1.09–1.34]), irrespective of strain ( $I^2 = 0$  %). However, after excluding pregnant women, the risk was more similar for males and females (aOR, 1.10 [95 % CI, 0.99–1.23]) (Table 4).

#### Risk of admission with influenza according presence of comorbidity

Similar proportions of influenza-positive admissions (882/2177; 41 %) and influenza-negative admissions (2865/7437; 39 %) had one or more chronic underlying condition ( $p = 0.0940$ ) (Table 3). After excluding pregnant women, 42 % of influenza-positive admissions had comorbidity compared to 39 % of influenza-negative admissions ( $p = 0.006$ ) (data not shown). The aOR for admission with influenza was 1.5 (95 % CI, 1.3–1.7) for patients with comorbidities, although the values were heterogeneous by strain ( $I^2 = 63$  %) (Table 4) due to a higher aOR for admission with A(H3N2) or B/Yamagata-lineage in patients with comorbidities compared to patients with no underlying conditions (Additional file 8).

Irrespective of the involved strain ( $I^2 = 22$  %), the risk of admission with influenza was significantly increased in patients with cardiovascular disease (aOR = 1.5 [95 % CI, 1.3–1.7]), asthma (1.4 [95 % CI, 1.0–1.8]), or diabetes (1.4 [95 % CI, 1.1–1.7]) (Table 4, Fig. 4, and Additional file 9). The aOR was heterogeneous for the risk of admission with influenza in patients with COPD (aOR 1.4 [95 % CI, 1.2–1.7];  $I^2 = 58$  %) due to lower aOR for admission with A(H1N1)pdm09 (Additional file 9). Point values for aORs were above 1.0 for admission with influenza for patients with renal, neuromuscular, or autoimmune disease, but 95 % CIs overlapped 1.0. In patients with active neoplasms, the overall aOR for influenza-positive admission was heterogeneous and not significant ( $I^2 = 56$  %; aOR = 1.3 [95 % CI, 0.9–1.8]),

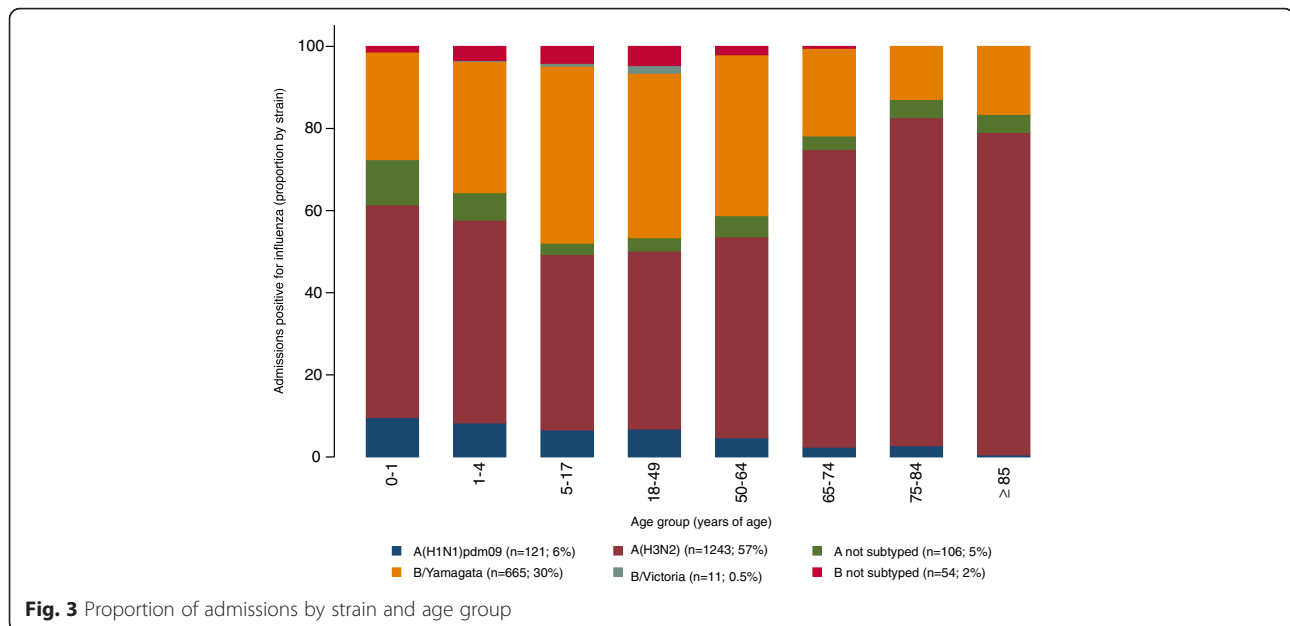




**Table 3** Characteristics of included patients according to PCR result (Continued)

|                                                                    |      |      |     |        |    |         |     |         |     |         |
|--------------------------------------------------------------------|------|------|-----|--------|----|---------|-----|---------|-----|---------|
| Smoking habits (patients $\geq 18$ y)                              |      |      |     |        |    |         |     |         |     |         |
| Never smoked                                                       | 1760 | 47.0 | 717 | 54.2   | 23 | 45.1    | 451 | 54.7    | 191 | 53.4    |
| Past smoker                                                        | 1164 | 31.1 | 380 | 28.7   | 14 | 27.5    | 252 | 30.6    | 96  | 26.8    |
| Current smoker                                                     | 818  | 21.9 | 227 | 17.1   | 14 | 27.5    | 121 | 14.7    | 71  | 19.8    |
| Functional status impairment (Barthel score; patients $\geq 65$ y) |      |      |     |        |    |         |     |         |     |         |
| Total (0–15)                                                       | 152  | 7.2  | 47  | 6.7    | 0  | 0.0     | 41  | 7.6     | 5   | 4.3     |
| Severe (20–35)                                                     | 76   | 3.6  | 19  | 2.7    | 0  | 0.0     | 13  | 2.4     | 4   | 3.5     |
| Moderate (40–55)                                                   | 140  | 6.7  | 46  | 6.6    | 0  | 0.0     | 32  | 5.9     | 11  | 9.6     |
| Mild (60–90)                                                       | 518  | 24.7 | 148 | 21.1   | 1  | 7.1     | 111 | 20.5    | 32  | 27.8    |
| Minimal (95–100)                                                   | 1214 | 57.8 | 441 | 62.9   | 13 | 92.9    | 345 | 63.7    | 63  | 54.8    |
| Influenza vaccination $\geq 14$ d since onset of symptoms          | 1566 | 21.1 | 447 | 20.5   | 6  | 5.2     | 356 | 28.9    | 57  | 8.8     |
|                                                                    |      |      |     | 0.5960 |    | <0.0001 |     | <0.0001 |     | <0.0001 |

Not subtyped A and B were 24 patients with mixed influenza infections were not included in the analysis by strain



although for B/Yamagata-lineage, the risk was significantly elevated (aOR = 2.2 [95 % CI, 1.1–4.1]) (Additional file 9).

#### Risk of admission with influenza according pregnancy

A total of 298 included admissions were pregnant women 15–45 years of age, 291 of whom were included in Moscow, one in the Czech Republic, one in Turkey, and five in Valencia (Table 2). No pregnant women were included in Beijing. Non-pregnant women in this age group accounted for another 359 included admissions, of which 197 were in St. Petersburg, 13 in Moscow, 13 in the Czech Republic, 20 in Turkey, 33 in Beijing, and 83 in Valencia (data not shown).

The probability of laboratory-confirmed influenza was higher in included pregnant women than included same age non-pregnant women (54 % vs. 24 %;  $p < 0.0001$ ; data not shown). After taking into account clustering by site (and not considering data from Beijing), the crude OR of admission with influenza was 3.5 (95 % CI, 2.2–5.3) (Table 4). This crude estimated OR was higher in pregnant women with associated comorbidity (OR 7.1 [95 % CI, 3.1–16.2]), with moderate evidence of an interaction between comorbidity and pregnancy before adjustment ( $p = 0.0659$ ) and a significant interaction after adjustment ( $p < 0.0001$ ). Taking into account the modifying effect of associated comorbidity, the aOR for admission with influenza in pregnant women was 4.3 (95 % CI, 2.7–6.9) in presence of associated comorbidity and 2.1 (95 % CI, 1.4–3.0) for pregnant women with no comorbidity. In both cases, the values were homogenous ( $I^2 = 0$ ) for A(H3N2), A(H1N1)pdm09, and B/Yamagata-lineage infections.

The probability of admission with influenza was higher in all three trimesters for pregnant women without associated comorbidities than for non-pregnant women in the same age group without comorbidity. In pregnant women with comorbidities, the risk of admission with influenza was highest in the first trimester (Fig. 5 and Additional file 10).

#### Risk of admission with influenza and complications by strain

Intensive care unit (ICU) admissions, extracorporeal membrane oxygenation, and mechanical ventilation were more frequent for influenza-negative than for influenza-positive admissions ( $p \leq 0.002$ ), whereas rates of in-hospital death were similar ( $p = 0.3460$ ) (Table 5). By strain, the point estimate of rates of ICU admission and extracorporeal membrane oxygenation were higher in admissions with A(H1N1)pdm09, although differences were not significant. In contrast, rates of in-hospital death were significantly higher in admissions with A(H3N2) ( $p = 0.0080$ ). Less than 4 % of admissions in these categories experienced a severe outcome. Finally, length of stay did not differ between influenza-positives and influenza-negative admissions for influenza overall or between strains (Table 5).

Exacerbation of chronic obstructive pulmonary disease, respiratory failure, exacerbation of asthma, and bronchiolitis were more frequently reported for influenza-positive admissions than for influenza-negative admissions (Table 5). These were associated with A(H3N2), except in the case of bronchiolitis, where the proportions for admission with all three strains (A(H3N2), A(H1N1)pdm09, and B/Yamagata-lineage) were higher than the proportion for influenza-negative

**Table 4** Subject characteristics and risk of admission with influenza

| Characteristic                                      | All admissions<br>N = 9164 | Influenza-positive<br>N = 2177 |      | Crude OR |            | Heterogeneity<br>by strain (I <sup>2</sup> ) <sup>a</sup> | aOR <sup>b</sup> |           |
|-----------------------------------------------------|----------------------------|--------------------------------|------|----------|------------|-----------------------------------------------------------|------------------|-----------|
|                                                     | n                          | n                              | %    | Value    | 95 % CI    |                                                           | Value            | 95 % CI   |
| <b>Age</b>                                          |                            |                                |      |          |            |                                                           |                  |           |
| 0–1 y                                               | 1515                       | 144                            | 9.5  | 1.00     | -          | 32.5 %                                                    | 1.00             | -         |
| 2–4 y                                               | 2206                       | 429                            | 19.4 | 2.30     | 1.88-2.81  | 0.0 %                                                     | 2.14             | 1.74-2.64 |
| 5–17 y                                              | 827                        | 280                            | 33.9 | 4.87     | 3.90-6.10  | 73.3 %                                                    | 4.34             | 3.42-5.51 |
| 18–49 y                                             | 1461                       | 423                            | 29.0 | 3.88     | 3.16-4.77  | 59.2 %                                                    | 3.11             | 2.49-3.90 |
| 50–64 y                                             | 748                        | 191                            | 25.5 | 3.26     | 2.57-4.14  | 72.5 %                                                    | 4.08             | 3.11-5.36 |
| 65–74 y                                             | 819                        | 211                            | 25.8 | 3.30     | 2.62-4.17  | 67.8 %                                                    | 4.99             | 3.76-6.64 |
| 75–84 y                                             | 1227                       | 294                            | 24.0 | 3.00     | 2.42-3.72  | 62.4 %                                                    | 4.51             | 3.43-5.92 |
| ≥85                                                 | 811                        | 205                            | 25.3 | 3.22     | 2.55-4.07  | 71.2 %                                                    | 4.79             | 3.59-6.40 |
| <b>Sex<sup>c</sup></b>                              |                            |                                |      |          |            |                                                           |                  |           |
| Male                                                | 5417                       | 1141                           | 21.1 | 1.00     | -          | 0.0 %                                                     | 1.00             | -         |
| Female                                              | 4197                       | 1036                           | 24.7 | 1.24     | 1.13-1.37  | 0.0 %                                                     | 1.21             | 1.09-1.34 |
| Female non-pregnant                                 | 3899                       | 876                            | 22.5 | 1.11     | 1.00-1.22  | 0.0 %                                                     | 1.10             | 0.99-1.23 |
| <b>Other risk factors (excludes pregnant women)</b> |                            |                                |      |          |            |                                                           |                  |           |
| Comorbidity <sup>d</sup>                            | 3709                       | 856                            | 23.1 | 1.15     | 1.04-1.27  | 62.8 %                                                    | 1.48             | 1.30-1.69 |
| Cardiovascular disease                              | 1996                       | 468                            | 23.4 | 1.17     | 1.04-1.33  | 22.2 %                                                    | 1.47             | 1.25-1.72 |
| Chronic obstructive pulmonary disease               | 1458                       | 306                            | 21.0 | 1.02     | 0.88-1.17  | 57.6 %                                                    | 1.39             | 1.15-1.68 |
| Asthma                                              | 440                        | 96                             | 21.8 | 1.07     | 0.84-1.35  | 0.0 %                                                     | 1.37             | 1.04-1.80 |
| Immunosuppression                                   | 106                        | 14                             | 13.2 | 0.58     | 0.33-1.03  | 0.0 %                                                     | 0.76             | 0.40-1.46 |
| Diabetes                                            | 1048                       | 234                            | 22.3 | 1.10     | 0.94-1.29  | 0.0 %                                                     | 1.36             | 1.10-1.70 |
| Renal disease                                       | 588                        | 129                            | 21.9 | 1.08     | 0.88-1.32  | 48.2 %                                                    | 1.23             | 0.95-1.59 |
| Neuromuscular                                       | 167                        | 52                             | 31.1 | 0.93     | 0.68-1.26  | 38.9 %                                                    | 1.13             | 0.80-1.58 |
| Neoplasm (active)                                   | 301                        | 63                             | 20.9 | 1.01     | 0.76-1.35  | 55.6 %                                                    | 1.29             | 0.92-1.81 |
| Liver disease                                       | 200                        | 33                             | 16.5 | 0.76     | 0.52-1.11  | 50.8 %                                                    | 0.79             | 0.52-1.21 |
| Autoimmune disease                                  | 161                        | 39                             | 24.2 | 1.22     | 0.85-1.77  | 0.0 %                                                     | 1.44             | 0.95-2.18 |
| Obese <sup>e</sup>                                  | 1620                       | 337                            | 20.8 | 1.0      | 0.9-1.2    | 0.0 %                                                     | 0.87             | 0.73-1.03 |
| <b>Pregnancy<sup>f</sup></b>                        |                            |                                |      |          |            |                                                           |                  |           |
| Associated comorbidity                              | 298                        | 160                            | 53.7 | 3.45     | 2.23-5.34  | 0.0 %                                                     | 2.08             | 1.43-3.03 |
| No comorbidity                                      | 38                         | 26                             | 68.4 | 7.07     | 3.09-16.18 | 0.0 %                                                     | 4.29             | 2.65-6.94 |
| No comorbidity                                      | 260                        | 126                            | 48.5 | 3.05     | 2.08-4.47  | 0.0 %                                                     | 1.80             | 1.22-2.66 |

<sup>a</sup>Strains considered: A(H3N2), A(H1N1)pdm09 and B/Yamagata

<sup>b</sup>Minimal sufficient adjustment sets for estimating the exposure or risk factor effect on the risk of admission with influenza vs. all included admissions without underlying conditions or pregnant

<sup>c</sup>Female or female non-pregnant vs. male. aORs were adjusted for age, occupational social class group, underlying comorbidity, obesity, influenza vaccination, time to swab, calendar time, and site as a clustering factor

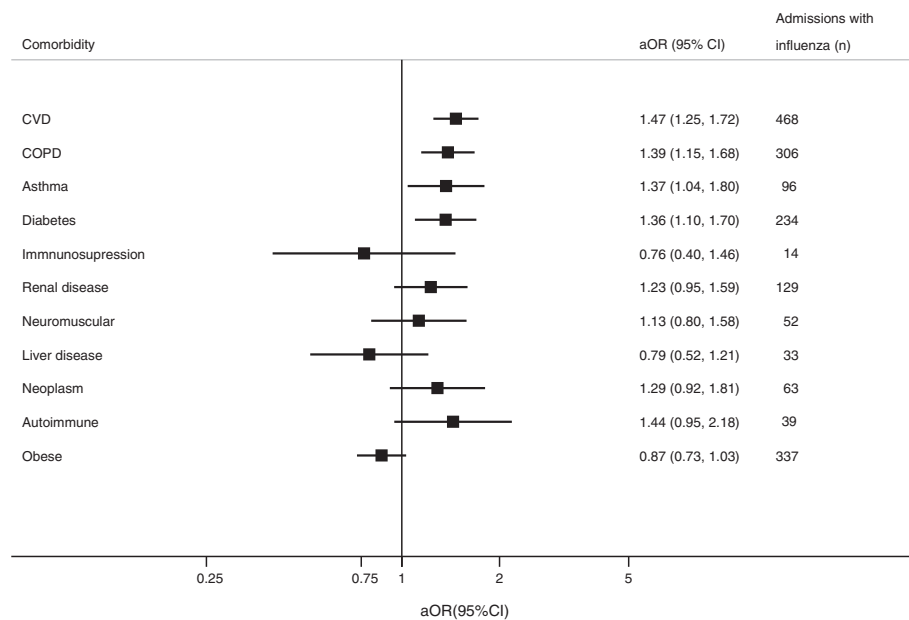
<sup>d</sup>One or more underlying conditions or individual comorbidities vs. no comorbidity. aORs were adjusted for sex, occupational social class group, obesity, influenza vaccination, time to swab, calendar time, and site as a clustering factor

<sup>e</sup>aOR adjusted for sex, age, occupational social class group, influenza vaccination, time to swab, calendar time, and site as a clustering factor

<sup>f</sup>Women 15-45 years of age included in Moscow, St. Petersburg, Czech Republic, Turkey and Valencia. aOR adjusted for smoking habits, time to swab, calendar time, comorbidity, and site as a clustering factor. For results stratified by comorbidity, aORs were adjusted by the same covariates and were estimated taking into account the interaction between pregnancy and comorbidity

admissions. Cardiovascular events were more frequently reported for admissions with influenza A(H3N2) than for admissions with influenza A(H1N1)pdm09 or B (OR 1.3 [95 % CI, 1.1–1.6];  $p = 0.0004$ ; data not shown), whereas, shock was more frequent in admissions with influenza A(H1N1)pdm09 (adjusted  $p < 0.0001$ ; Table 5).

Figure 6 shows the estimated marginal probabilities by strain and age for severe outcomes after adjusting by sex, comorbidity, calendar time, age, and clustering by site. We found several non-significant associations: A(H1N1)pdm09 was associated with intensive care unit admission and shock; A(H3N2) was



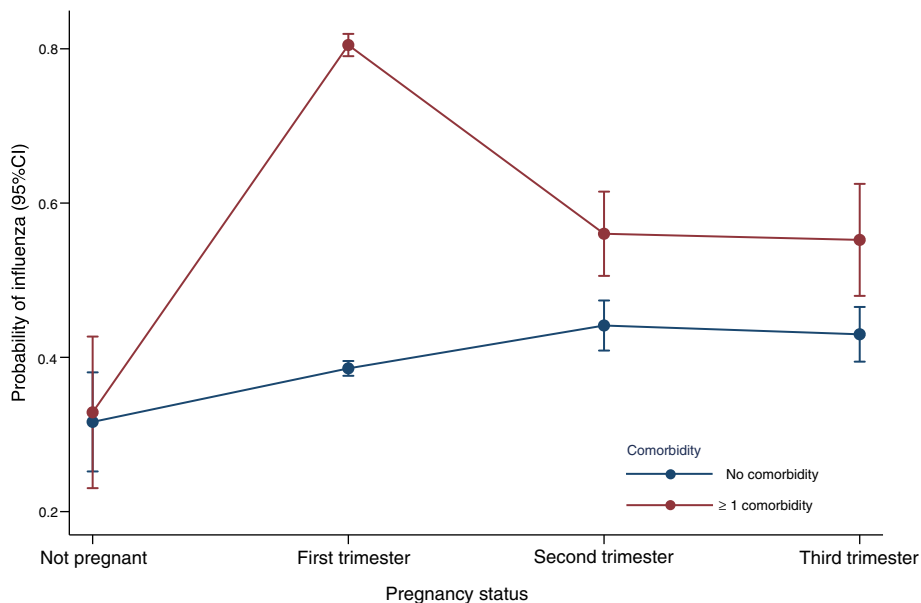
**Fig. 4** Adjusted odds ratio (aOR) and number of admissions with influenza according to comorbidity. CVD, cardiovascular disease. COPD: chronic obstructive pulmonary disease

associated with an increased probability of COPD exacerbation, respiratory failure, cardiovascular complications, and death; B/Yamagata-lineage was related to respiratory failure; and all three strains were related to death at both extremes of age (Fig. 6). We found similar non-significant associations for complications when influenza-negative admissions were included (Additional file 11).

**Influenza vaccine effectiveness in the GIHSN during the 2014–2015 influenza season**

**Patients included in the influenza vaccine effectiveness analysis**

After applying exclusions related to vaccine contraindication (egg allergy and <6 months of age), 8455 specimens collected from November, 2014 through May, 2015 were included in the IVE analyses. Of all collected



**Fig. 5** Predicted probability of admission with influenza in non-pregnant 15 – 45 years old women and by pregnancy trimester in same age pregnant women

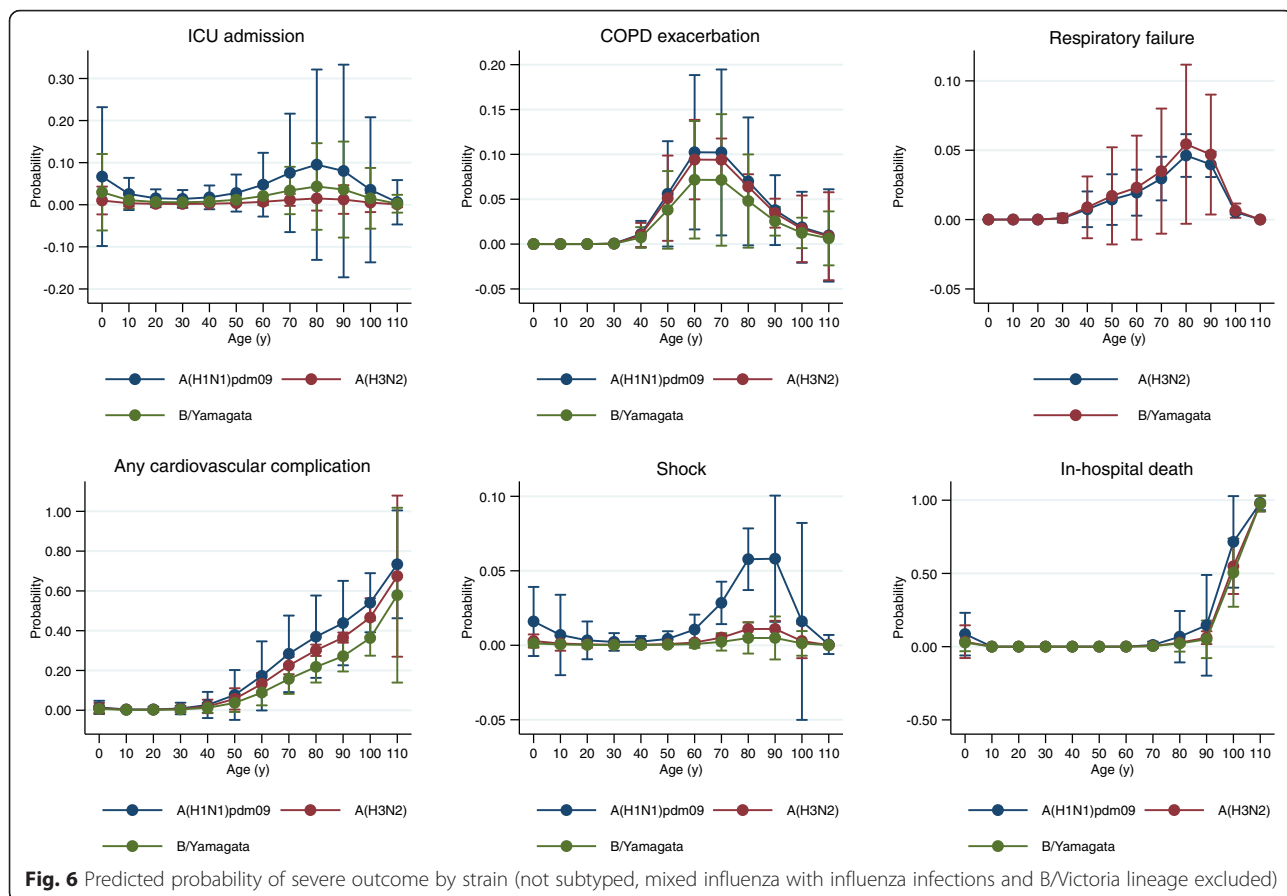
**Table 5** Influenza severity and complications by RT-PCR result

| Category                                            | Influenza-negative<br>N = 7437 |       | Influenza-positive<br>N = 2177 |       | P-value influenza-<br>negative vs. positive | A(H1N1)pdm09<br>N = 115 |       | A(H3N2)<br>N = 1231 |       | B/Yamagata lineage<br>N = 646 |       | P-value for<br>distribution<br>by strain |
|-----------------------------------------------------|--------------------------------|-------|--------------------------------|-------|---------------------------------------------|-------------------------|-------|---------------------|-------|-------------------------------|-------|------------------------------------------|
|                                                     | n                              | %     | n                              | %     |                                             | n                       | %     | n                   | %     | n                             | %     |                                          |
| Severity indicator                                  |                                |       |                                |       |                                             |                         |       |                     |       |                               |       |                                          |
| Intensive care unit admission                       | 184                            | 2.5   | 31                             | 1.4   | 0.0020                                      | 4                       | 3.5   | 15                  | 1.2   | 9                             | 1.4   | 0.2400                                   |
| Mechanical ventilation                              | 123                            | 1.7   | 20                             | 0.9   | <0.0001                                     | 1                       | 0.9   | 14                  | 1.1   | 4                             | 0.6   | 0.5230                                   |
| Extracorporeal membrane oxygenation                 | 184                            | 2.8   | 25                             | 1.3   | 0.0020                                      | 3                       | 2.6   | 9                   | 0.8   | 9                             | 1.7   | 0.1600                                   |
| Death during hospitalisation                        | 131                            | 1.8   | 32                             | 1.5   | 0.3460                                      | 1                       | 0.9   | 26                  | 2.1   | 3                             | 0.5   | 0.0080                                   |
| Length of stay (days), median (interquartile range) | 6                              | (4-9) | 6                              | (4-8) | 0.0612                                      | 6                       | (3-8) | 6                   | (3-8) | 6                             | (4-8) | 0.2835                                   |
| Pulmonary complications                             |                                |       |                                |       | <0.0001                                     |                         |       |                     |       |                               |       | <0.0001                                  |
| None                                                | 1939                           | 26.1  | 1212                           | 55.7  |                                             | 53                      | 46.1  | 697                 | 56.6  | 353                           | 54.6  |                                          |
| Pneumonia                                           | 1545                           | 20.8  | 364                            | 16.7  |                                             | 18                      | 15.7  | 214                 | 17.4  | 109                           | 16.9  |                                          |
| COPD exacerbation                                   | 265                            | 3.6   | 87                             | 4.0   |                                             | 3                       | 2.6   | 66                  | 5.4   | 15                            | 2.3   |                                          |
| Respiratory failure                                 | 55                             | 0.7   | 32                             | 1.5   |                                             | 0                       | 0.0   | 23                  | 1.9   | 5                             | 0.8   |                                          |
| Asthma exacerbation                                 | 28                             | 0.4   | 12                             | 0.6   |                                             | 0                       | 0.0   | 11                  | 0.9   | 1                             | 0.2   |                                          |
| pulmonary collapse                                  | 5                              | 0.1   | 1                              | 0.0   |                                             | 0                       | 0.0   | 1                   | 0.1   | 0                             | 0.0   |                                          |
| Acute respiratory distress syndrome                 | 7                              | 0.1   | 2                              | 0.1   |                                             | 0                       | 0.0   | 2                   | 0.2   | 0                             | 0.0   |                                          |
| Bronchiolitis                                       | 416                            | 5.6   | 201                            | 9.2   |                                             | 15                      | 13.0  | 91                  | 7.4   | 75                            | 11.6  |                                          |
| Upper respiratory infection                         | 3172                           | 42.7  | 266                            | 12.2  |                                             | 26                      | 22.6  | 126                 | 10.2  | 88                            | 13.6  |                                          |
| Metabolic failure                                   |                                |       |                                |       | 0.4690                                      |                         |       |                     |       |                               |       | 0.3530                                   |
| Acute renal failure                                 | 87                             | 1.2   | 32                             | 1.5   |                                             | 1                       | 0.9   | 24                  | 1.9   | 5                             | 0.8   |                                          |
| Diabetic coma                                       | 4                              | 0.1   | 2                              | 0.1   |                                             | 0                       | 0.0   | 1                   | 0.1   | 0                             | 0.0   |                                          |
| Fluid/electrolyte/acid-base/balance disorders       | 80                             | 1.1   | 29                             | 1.3   |                                             | 1                       | 0.9   | 19                  | 1.5   | 7                             | 1.1   |                                          |
| Cardiovascular events                               |                                |       |                                |       | 0.3390                                      |                         |       |                     |       |                               |       | <0.0001                                  |
| None                                                | 6335                           | 85.2  | 1883                           | 86.5  |                                             | 107                     | 93.0  | 991                 | 80.5  | 612                           | 94.7  |                                          |
| Acute myocardial infarction                         | 8                              | 0.1   | 5                              | 0.2   |                                             | 0                       | 0.0   | 5                   | 0.4   | 0                             | 0.0   |                                          |
| Acute heart failure                                 | 1                              | 0.0   | 1                              | 0.0   |                                             | 0                       | 0.0   | 1                   | 0.1   | 0                             | 0.0   |                                          |
| Cardiac arrest                                      | 4                              | 0.1   | 3                              | 0.1   |                                             | 0                       | 0.0   | 3                   | 0.2   | 0                             | 0.0   |                                          |
| Malignant hypertension                              | 37                             | 0.5   | 10                             | 0.5   |                                             | 0                       | 0.0   | 9                   | 0.7   | 1                             | 0.2   |                                          |
| Any cardiovascular condition                        | 1050                           | 14.1  | 275                            | 12.6  |                                             | 8                       | 7.0   | 222                 | 18.0  | 33                            | 5.0   |                                          |

**Table 5** Influenza severity and complications by RT-PCR result (Continued)

|                                                                                           | 76   | 1.0  | 12   | 0.6  | 0.0320  | 2   | 1.7  | 9    | 0.7  | 1   | 0.2   | 0.0810  |
|-------------------------------------------------------------------------------------------|------|------|------|------|---------|-----|------|------|------|-----|-------|---------|
| Systemic inflammatory response syndrome, shock, or disseminated intravascular coagulation |      |      |      |      |         |     |      |      |      |     |       |         |
| Neurologic events                                                                         |      |      |      |      |         |     |      |      |      |     |       |         |
| No                                                                                        | 7423 | 99.8 | 2173 | 99.8 | 0.3140  | 114 | 99.1 | 1228 | 99.8 | 646 | 100.0 | 0.1249  |
| Altered mental status                                                                     | 10   | 0.1  | 4    | 0.2  |         | 1   | 0.9  | 3    | 0.2  | 0   | 0.0   |         |
| Convulsions                                                                               | 4    | 0.1  | 0    | 0.0  |         | 0   | 0.0  | 0    | 0.0  | 0   | 0.0   |         |
| Major discharge diagnoses                                                                 |      |      |      |      | <0.0001 |     |      |      |      |     |       | <0.0001 |
| Influenza                                                                                 | 124  | 1.7  | 1266 | 58.2 |         | 76  | 66.1 | 603  | 49.0 | 456 | 70.6  |         |
| Pneumonia                                                                                 | 1807 | 24.3 | 223  | 10.2 |         | 10  | 8.7  | 145  | 11.8 | 59  | 9.1   |         |
| Other respiratory disease                                                                 | 3653 | 49.1 | 290  | 13.3 |         | 20  | 17.4 | 188  | 15.3 | 57  | 8.8   |         |
| Cardiovascular                                                                            | 603  | 8.1  | 117  | 5.4  |         | 0   | 0.0  | 105  | 8.5  | 7   | 1.1   |         |
| Other                                                                                     | 1250 | 16.8 | 281  | 12.9 |         | 9   | 7.8  | 190  | 15.4 | 67  | 10.4  |         |





specimens, 2027 (24 %) were positive for influenza, of which 1165 (57 %) were positive for A(H3N2), 104 (5 %) for A(H1N1)pdm09, and 625 (31 %) for B Yamagata-lineage (Table 6). Overall, 22 % ( $n = 446$ ) of influenza-positive admissions and 24 % ( $n = 1556$ ) of influenza-negative admissions were vaccinated ( $p = 0.042$ ) (Table 7). The proportion of patients vaccinated with the seasonal influenza vaccine in 2014–2015  $\geq 14$  days before symptom onset was 3 % in St. Petersburg ( $n = 43$ ) and Moscow ( $n = 30$ ), 5 % in Turkey ( $n = 22$ ), 11 % ( $n = 94$ ) in Beijing, and 54 % ( $n = 1367$ ) in Valencia (data not shown).

Overall, 1709 of 2002 (85 %) influenza vaccinations among study patients were both self-reported and confirmed from registries. Self-report captured 156 of 2002 vaccinations (8 % overall, 67 % in Moscow, 8 % in Turkey, 1 % in Beijing, and 7 % in Valencia; data not shown). Another 137 patients (7 % overall, 12 % in St. Petersburg, 42 % in Turkey, and 7 % in Valencia; data not shown) with vaccination records failed to self-report vaccination.

The proportion of participants with comorbidity was significantly higher in vaccinated than in non-vaccinated admissions (82 % vs. 30 %,  $p < 0.001$ ) (Table 7). Vaccination was also more common among

elderly (median age = 79 years for vaccinated patients vs. 15 years for non-vaccinated patients,  $p < 0.001$ ), obese patients (28 % obese for vaccinated patients vs. 15 % for non-vaccinated patients,  $p < 0.001$ ), elderly patients with impairment or minimal functional impairment (28 % impaired for vaccinated patients vs. 15 % for non-vaccinated patients,  $p < 0.001$ ), patients with outpatient visits (83 % for vaccinated patients vs. 72 % for non-vaccinated patients,  $p < 0.001$ ), and patients admitted to a hospital in the previous 12 months (38 % for vaccinated patients vs. 29 % for non-vaccinated patients,  $p < 0.001$ ) (Table 7). Three (0.1 %) pregnant women had received the current season's vaccine.

Most patients vaccinated in 2014–2015 reported prior vaccination: 87 % of vaccinated patients had received the 2013–2014 vaccine ( $p < 0.001$ ) and 73 % had received the 2012–2013 vaccine ( $p < 0.001$ ) (Table 7). Both the 2011–2012 and 2012–2013 vaccines were received by 90 % (26/29) of cases and 77 % (89/116) of controls ( $p = 0.12$ ).

**Influenza vaccine effectiveness**

Against all-age influenza-related hospitalisation, the overall crude IVE was -1 % (95 % confidence interval

**Table 6** IVE for all cases and for targeted groups only by age and strain

| Population           | Strain     | Age   | Influenza-positive |            | Influenza-negative |            | Crude IVE         |               | Adjusted IVE      |               |
|----------------------|------------|-------|--------------------|------------|--------------------|------------|-------------------|---------------|-------------------|---------------|
|                      |            |       | Total              | Vaccinated | Total              | Vaccinated | Percent (95 % CI) | P interaction | Percent (95 % CI) | P interaction |
| Overall              | Any        | Any   | 2027               | 446        | 6428               | 1556       | -1 (-17, 12)      |               | 22 (8, 33)        |               |
|                      |            | <65 y | 1334               | 78         | 4299               | 289        | -4 (-36, 20)      | 0.090         | -5 (-38, 20)      | 0.054         |
|                      |            | ≥65 y | 693                | 368        | 2129               | 1267       | 21 (5, 34)        |               | 24 (9, 37)        |               |
|                      | A(H3N2)    | Any   | 1165               | 356        | 6428               | 1556       | -6 (-24, 10)      |               | 20 (4, 33)        |               |
|                      |            | <65 y | 630                | 50         | 4299               | 289        | -15 (-59, 17)     | 0.036         | -16 (-64, 17)     | 0.031         |
|                      |            | ≥65 y | 535                | 306        | 2129               | 1267       | 24 (7, 37)        |               | 25 (8, 39)        |               |
|                      | A(H1N1)    | Any   | 104                | 7          | 6428               | 1556       | 25 (-85, 69)      |               | 27 (-82, 71)      |               |
|                      |            | <65 y | 91                 | 3          | 4299               | 289        | 16 (-173, 74)     | 0.996         | 21 (-161, 76)     | 0.993         |
|                      |            | ≥65 y | 13                 | 4          | 2129               | 1267       | 47 (-128, 88)     |               | 59 (-83, 91)      |               |
|                      | B/Yamagata | Any   | 625                | 57         | 6428               | 1556       | 16 (-17, 39)      |               | 31 (2, 52)        |               |
|                      |            | <65 y | 509                | 20         | 4299               | 289        | 7 (-51, 42)       | 0.266         | 29 (-17, 58)      | 0.273         |
|                      |            | ≥65 y | 116                | 37         | 2129               | 1267       | 38 (-2, 62)       |               | 33 (-12, 61)      |               |
| Targeted groups only | Any        | Any   | 1670               | 425        | 5077               | 1462       | 13 (-2, 26)       |               | 23 (8, 35)        |               |
|                      |            | <65 y | 977                | 57         | 2948               | 195        | -21 (-70, 14)     | 0.037         | -12 (-58, 20)     | 0.019         |
|                      |            | ≥65 y | 693                | 368        | 2129               | 1267       | 26 (16, 42)       |               | 28 (14, 41)       |               |
|                      | H3N2       | Any   | 994                | 344        | 5077               | 1462       | 13 (-4, 28)       |               | 22 (5, 36)        |               |
|                      |            | <65 y | 459                | 38         | 2948               | 195        | -12 (-65, 24)     | 0.051         | -20 (-80, 21)     | 0.030         |
|                      |            | ≥65 y | 535                | 306        | 2129               | 1267       | 27 (11, 41)       |               | 28 (11, 42)       |               |
|                      | H1N1       | Any   | 84                 | 6          | 5077               | 1462       | 44 (-58, 80)      |               | 46 (-52, 81)      |               |
|                      |            | <65 y | 71                 | 2          | 2948               | 195        | 33 (-198, 85)     | 0.793         | 39 (-167, 86)     | 0.770         |
|                      |            | ≥65 y | 13                 | 4          | 2129               | 1267       | 47 (-128, 88)     |               | 50 (-111, 89)     |               |
|                      | B/Yamagata | Any   | 486                | 49         | 5077               | 1462       | 21 (-18, 46)      |               | 30 (-5, 53)       |               |
|                      |            | <65 y | 370                | 12         | 2948               | 195        | -8 (-105, 44)     | 0.139         | 8 (-79, 53)       | 0.250         |
|                      |            | ≥65 y | 116                | 37         | 2129               | 1267       | 38 (-2, 62)       |               | 33 (-12, 60)      |               |

Abbreviation: IVE influenza vaccine effectiveness

[CI], -17–12), and the adjusted IVE was 22 % (95 % CI, 8–33) (Table 6). Age at admission, presence of comorbidities, and degree of functional impairment were the covariates with the largest confounding effect on crude IVE (data not shown), raising the crude IVE with adjustment.

The adjusted IVE for patients of all ages was higher against influenza B (31 % [95 % CI, 2–52]) than for influenza A(H3N2) (20 % [95 % CI, 4–33]) and influenza A(H1N1)pdm09 (27 % [95 % CI, -82–71]) (Table 6), although confidence intervals overlapped ( $I^2$  for adjusted IVE across strains = 0 %,  $p = 0.762$ ; data not shown).

Age-specific estimates suggested that vaccination against any influenza was less effective in patients <65 years of age (IVE [95 % CI] = -5 % [-38–20]) than in patients ≥65 years of age (IVE = 24 % [95 % CI, 9–37]) ( $P$  value for effect modification of age = 0.054). This pattern of lower IVE in the younger patients was consistent across strains, but only age-specific estimates for A(H3N2) were significantly different (Table 6).

Estimates were similar when the analyses were restricted to patients belonging to the target group for vaccination (crude IVE against overall influenza for all ages = 13 % [95 % CI, -2–26], adjusted IVE = 23 % [95 % CI, 8–35]) (Table 6).

IVE estimates were consistently higher for recipients of the 2012–2013 influenza vaccine, the 2013–2014 influenza vaccine, or both vaccines than for recipients of only the current season's vaccine, although confidence intervals overlapped (Additional file 12).

Statistical heterogeneity across sites in the estimates of IVE against influenza-related hospitalisation was relatively low, with site-specific adjusted point estimates ranging from -27 – 35 % [ $I^2 = 0$  %;  $P = 0.835$ ] (Additional file 13).

Sensitivity analyses were performed to assess the effects of excluding pregnant women, participants vaccinated within 14 days before symptom onset, and without medical vaccination records. In all cases, IVE estimates remained similar to those of primary analysis (Additional file 14). Further sensitivity analyses using various statistical methods to account for potential data

**Table 7** Characteristics of patients included in the primary analysis by vaccination status

| Risk variables                                   | Category        | Unvaccinated    |      | Vaccinated      |      | P value |
|--------------------------------------------------|-----------------|-----------------|------|-----------------|------|---------|
|                                                  |                 | n               | %    | N               | %    |         |
| Number of patients, n (%)                        | Controls        | 4872            | 75.5 | 1556            | 77.7 | 0.042   |
|                                                  | Cases           | 1581            | 24.5 | 446             | 22.3 |         |
| Age (y)                                          | Median (range)  | 14.6 (0.8-84.0) |      | 78.7 (9.0-91.9) |      | <0.001  |
| Age group, n (%)                                 | 6–11 mo         | 496             | 7.7  | 3               | 0.1  |         |
|                                                  | 1–4 y           | 2120            | 32.9 | 49              | 2.4  |         |
|                                                  | 5–17 y          | 712             | 11.0 | 102             | 5.1  |         |
|                                                  | 18–49 y         | 1347            | 20.9 | 75              | 3.7  |         |
|                                                  | 50–64 y         | 591             | 9.2  | 138             | 6.9  |         |
|                                                  | 65–74 y         | 388             | 6.0  | 416             | 20.8 |         |
|                                                  | 75–84 y         | 512             | 7.9  | 704             | 35.2 |         |
|                                                  | ≥85 y           | 287             | 4.4  | 515             | 25.7 |         |
| Female, n (%)                                    | -               | 2825            | 43.8 | 843             | 42.1 | 0.188   |
| Comorbidities, n (%)                             | None            | 4505            | 70   | 366             | 18.3 | <0.001  |
|                                                  | 1               | 1077            | 16.7 | 647             | 32.3 |         |
|                                                  | >1              | 871             | 13.5 | 989             | 49.4 |         |
| Pregnant, n (%)                                  | -               | 294             | 4.6  | 3               | 0.1  | <0.001  |
| Obesity, n (%)                                   | -               | 982             | 15.2 | 564             | 28.2 | <0.001  |
| Morbid obesity, n (%)                            | -               | 86              | 1.3  | 54              | 2.7  | <0.001  |
| Previous hospitalisation within 12 months, n (%) | -               | 1887            | 29.2 | 761             | 38   | <0.001  |
| GP visit within 3 months, n (%)                  | None            | 1815            | 28.1 | 343             | 17.1 | <0.001  |
|                                                  | 1               | 2027            | 31.4 | 389             | 19.4 |         |
|                                                  | >1              | 2606            | 40.4 | 1272            | 63.5 |         |
| Smoking, n (%)                                   | Current         | 1527            | 23.7 | 225             | 11.2 | <0.001  |
|                                                  | Past            | 1069            | 16.6 | 742             | 37.1 |         |
|                                                  | Never           | 3856            | 59.8 | 1035            | 51.7 |         |
| Functional impairment in ≥65 y, n (%)            | None or minimal | 619             | 54.2 | 1021            | 62.4 | <0.001  |
|                                                  | Mild            | 324             | 28.4 | 330             | 20.2 |         |
|                                                  | Moderate        | 95              | 8.3  | 88              | 5.4  |         |
|                                                  | Severe          | 32              | 2.8  | 62              | 3.8  |         |
|                                                  | Total           | 72              | 6.3  | 123             | 7.5  |         |
| Sampling interval (days)                         | Median (range)  | 3 (1-7)         |      | 4(1-7)          |      | <0.001  |
| Sampling interval, n (%)                         | ≤4 d            | 3703            | 57.4 | 990             | 49.5 | <0.001  |
|                                                  | 5-7 d           | 2587            | 40.1 | 936             | 46.8 |         |
|                                                  | 8-9 d           | 163             | 2.5  | 76              | 3.8  |         |
| Site, n (%)                                      | St. Petersburg  | 2138            | 33.1 | 59              | 2.9  | <0.001  |
|                                                  | Moscow          | 1306            | 20.2 | 39              | 1.9  |         |
|                                                  | Turkey          | 503             | 7.8  | 26              | 1.3  |         |
|                                                  | Beijing         | 996             | 15.4 | 127             | 6.3  |         |
|                                                  | Valencia        | 1510            | 23.4 | 1751            | 87.5 |         |
| Vaccinated, n (%)                                | In 2012–2013    | 473             | 7.5  | 1471            | 73.3 | <0.001  |
|                                                  | In 2013–2014    | 513             | 8.1  | 1722            | 87.1 | <0.001  |

clustering by site showed consistent results, with no evidence of heterogeneity ( $I^2 = 0\%$ ) in estimates of IVE across methods (Additional file 15).

## Discussion

According to data collected by active surveillance within the GIHSN sites, the 2014–2015 influenza season was characterised by a predominance of A(H3N2) and B/Yamagata-lineage, and to a lesser extent, A(H1N1)pdm09, while B/Victoria-lineage was relatively rare. Reports of severe influenza, defined as hospitalisation with laboratory (i.e., PCR)-confirmed influenza, spanned 6 months and affected all ages, although influenza-related admissions were most common in older individuals. Among patients with laboratory-confirmed influenza, those with A(H1N1)pdm09 were younger than those with A(H3N2) or B/Yamagata-lineage, whereas those with B/Yamagata-lineage were most frequently young and middle-aged adults. This pattern of influenza circulation is consistent with that reported by the WHO [13]. Likewise, the age distribution of the A(H1N1)pdm09, A(H3N2) and B/Yamagata-lineage strains agrees with others' reports [14, 15].

According to our data, comorbidity increased the risk of admission with influenza, irrespective of the strain involved. This was also the case for pregnant women. Furthermore, the combination of pregnancy and comorbidity increased the risk of admission several-fold, suggesting an interaction. Remarkably, however, nearly 60% of eligible admissions with influenza were patients without known risk factors.

The probability of ICU admission and shock were higher in patients infected with A(H1N1)pdm09 than with other strains. Also, A(H3N2) infection was associated with respiratory failure and cardiac complications, whereas B/Yamagata-lineage was associated with an increased probability of respiratory failure. Influenza infection overall was associated with in-hospital death at both age extremes. These findings agree with other reports [15–17], although there may be differences in the absolute percentage of admissions with influenza in patients with comorbidity, patterns of severity, lengths of hospital stay, rates of ICU admission, use of supportive measures, or estimates of in-hospital death rates [15, 18, 19].

Although vaccination coverage was low at the participating sites (2.8–48%; average 20.9%), we found that vaccination conferred a low to moderate protective effect (adjusted IVE = 22%). This protective effect was greater for adults  $\geq 65$  years of age than for adults  $< 65$  years of age and was greater for B/Yamagata-lineage than for A(H3N2).

The low influenza vaccine effectiveness for the 2014–2015 season is similar to others' reports and appears to be due mostly to a mismatch between the main

A(H3N2) circulating strain and the vaccine strain [20–23]. Across all strains, the IVE was lower in young patients, although only age-specific estimates for A(H3N2) were significantly different due to few cases of B/Yamagata-lineage and A(H1N1)pdm09 and a higher IVE in patients vaccinated during the 2012–2013, 2013–2014, or both seasons than in those vaccinated during the 2014–2015 season, a finding also reported by others [24]. This lower IVE in young patients, however, contrasts with previous reports where the opposite was found [25]. Thus, there appears to be variability in the interference or protection conferred by vaccination in previous seasons. This could be explained by the differences between the various strains circulating in different seasons and their distance from the vaccine strains, combined with inhibition of the immunological response when the vaccine strains are similar to those in previous seasons' vaccines [26].

## Limitations and considerations

Our results are to be interpreted with caution due to the heterogeneity and bias of multi-centric observational studies. We assumed heterogeneity in the circulating strains, socio-demographic diverse populations observed, their health care seeking behaviour, the characteristics of the different health care systems involved, the types of participating hospitals, and by calendar time along the season. We took account of this heterogeneity by thoroughly describing the season, the sites, and included admissions, as well as by quantifying the heterogeneity of our estimates. In this way, we are able to visualise the relative impact of the different influenza strains on diverse risk factors, including age, comorbidity, pregnancy, and obesity [12]. Furthermore, we restricted our analysis to periods with influenza circulation [27], took into account risk by calendar date [28], as well as the clustering effect of site [10] by adjusting and modelling and, finally, compared PCR-detected influenza-positive admissions with influenza-negative admissions. We consider this a reasonable approach for describing the effect of influenza in individuals according to their risk profile [29]. In addition, to reduce bias and to allow us to describe the severe consequences of community-acquired influenza, we accepted only data from patients admitted within 7 days of onset of ILI symptoms and for whom swabbing was performed within 48 h of admission.

Even with a large dataset as the one accrued annually by the GIHSN sites, small numbers are a limitation. Splitting the data by strain and risk group can decrease group sizes, so that sufficient power is available only for detecting large differences (i.e.,  $OR \geq 2$ ). This limitation can be only dealt with by increasing the number of participating sites and by pooling data across influenza

seasons. In fact, the GIHSN continues to grow, and data pooling across seasons is underway.

Most hospital studies rely on the criteria of the physician providing care for influenza confirmation and employ historical database searching [15, 17, 18, 30–32]. This combined with different case definitions and laboratory methods can complicate comparisons between sites and seasons and between different studies. Our approach of using active surveillance, a shared core protocol, and PCR confirmation of influenza avoids these limitations. This approach has very recently begun to be employed by others and for other respiratory viruses [33].

## Conclusions

This report describes the results from the GIHSN during the 2014–2015 influenza season that were presented at the 2015 GIHSN Annual Meeting. During the 2014–2015 influenza season, the network included 27 hospitals in six countries (Russian Federation, Czech Republic, Turkey, China, Spain, and Brazil). This offered us the opportunity to describe the characteristics of severe disease related to influenza by time, person, and strain and to describe IVE across a wide geographical area in the Northern Hemisphere.

We found that influenza is associated with severe outcomes during an extended period in the Northern Hemisphere and that comorbidity and pregnancy were significant risk factors for severe influenza illness. The distribution and impact of the three influenza virus types (A(H1N1)pdm09, A(H3N2), and B) were similar to others' reports. An important finding was that approximately 60 % of influenza-related hospital admissions were in healthy subjects with no known comorbidity.

Our results support the current WHO recommendations on the use of influenza vaccine [4], although for the 2014–2015, IVE was low due to a significant mismatch between the circulating and vaccine viruses. We also found that IVE was affected by age and the circulating strain. These findings highlight the need to develop vaccines that are more effective and cover a broader spectrum of influenza viruses.

## Additional files

**Additional file 1: Table S1.** Characteristics of participating hospitals during the 2014–2015 season. (PDF 101 kb)

**Additional file 2: Table S2.** Diagnoses and presenting complaints used to identify admissions possibly related with an influenza infection. (PDF 86 kb)

**Additional file 3: Table S3.** Protocol application across sites. (PDF 85 kb)

**Additional file 4: Table S4.** Types of vaccines available at each site. (PDF 69 kb)

**Additional file 5: Table S5.** Site heterogeneity in the risk of a positive influenza result in included admissions. (PDF 11 kb)

**Additional file 6: Figure S1.** Heterogeneity between sites in the OR of admission with a positive influenza result. (PDF 33 kb)

**Additional file 7: Figure S2.** aOR and number of admissions with influenza by age group and virus strain. (PDF 86 kb)

**Additional file 8: Figure S3.** aOR and number of admissions with influenza by virus strain in patients with one or more comorbidity compared to patients without comorbidity. (PDF 77 kb)

**Additional file 9: Figure S4.** aOR and number of admissions with influenza by chronic underlying comorbidity and virus strain. (PDF 52 kb)

**Additional file 10: Table S6.** Predicted probability of admission with influenza for women 15 to 45 years of age. (PDF 8 kb)

**Additional file 11: Figure S5.** Probability of severe outcome by RT-PCR result. (PDF 83 kb)

**Additional file 12: Figure S6.** aOR by vaccination the current year (2014–2015) and the two previous years (2013–2014 and 2012–2013). (PDF 31 kb)

**Additional file 13: Figure S7.** Site-specific IVE against all influenza types for all ages. (PDF 43 kb)

**Additional file 14: Table S7.** Sensitivity analysis. (PDF 106 kb)

**Additional file 15: Figure S8.** Statistical methods to account for data clustering by site. (PDF 31 kb)

## Abbreviations

AOR, adjusted odds ratio; CI, confidence interval; GIHSN, Global Influenza Hospital Surveillance Network; IVE, influenza vaccine effectiveness; OR, odds ratio; RT-PCR, reverse transcription-polymerase chain reaction

## Acknowledgments

The authors thank Dr. Phillip Leventhal (4Clinics, Paris, France) for medical writing, which was funded by Sanofi Pasteur. Members of the GIHSN as of October 19, 2015: Olga Afanasieva (Research Institute of Influenza, St. Petersburg, Russian Federation), Veronica Afanasieva (Research Institute of Influenza, St. Petersburg, Russian Federation), Meral Akcay Ciblak (National Influenza Reference Laboratory Capa-Istanbul, Istanbul, Turkey), F Aktas (Faculty of Medicine Gazi University, Ankara, Turkey), Selim Badur (National Influenza Reference Laboratory Capa-Istanbul, Istanbul, Turkey), Ángel Belenguer-Varea (Hospital de La Ribera, Alzira, Spain), S Borekci (Cerrahpaşa Faculty of Medicine, Istanbul University, Istanbul, Turkey), Fernando Boza (Hospital Quinta D'Or, Rio de Janeiro, Brazil), Elena Bursteva (D.I. Ivanovsky Institute of Virology FGBC "N.F. Gamaleya FRCM" Ministry of Health, Moscow, Russian Federation), Zhanna Buzitskaya (Research Institute of Influenza, St. Petersburg, Russian Federation), Braulia Caetano (Oswaldo Cruz Foundation (FIOCRUZ), Rio de Janeiro, Brazil), Jian Cai (Zhejiang Provincial Center for Disease Control and Prevention, Hangzhou, China), B Çakir (Department of Public Health, Faculty of Medicine, Sıhhiye, Ankara, Turkey), Mario Carballido-Fernández (Hospital General, Castellón, Spain), Empar Carbonell-Franco (Hospital Arnau de Vilanova, Valencia, Spain), Concha Carratalá-Munuera (Universidad Miguel Hernández, San Juan de Alicante, Spain), S Çelebi (Uludağ University Faculty of Medicine, Bursa, Turkey), C Chai (Zhejiang Provincial Center for Disease Control and Prevention, Hangzhou, China), Ivamara Changas de Lima Porto de Paula (Universidade Federal do Ceará, Fortaleza, Brazil), Enfu Chen (Zhejiang Provincial Center for Disease Control and Prevention, Hangzhou, China), Ben Cowling (School of Public Health, Li Ka Shing Faculty of Medicine, University of Hong Kong, Hong Kong Special Administrative Region, China), Yunjie Cui (Changping District Hospital, Beijing, China), DB Deniz (Dr. Siyami Ersek Göğüs Kalp ve Damar Cerrahisi Eğitim ve Araştırma Hastanesi, Istanbul, Turkey), Elena Dondurei (Research Institute of Influenza, St. Petersburg, Russian Federation), H Dong (Ningbo Center for Diseases Prevention and Control, Ningbo, China), X Dong (The First Peoples' Hospital of Huzhou, Huzhou, China), Mine Durusu (Hacettepe University, Ankara, Turkey), Clotilde El Guerche-Séblain (SANOFI Pasteur, Lyon, France), Fernanda Enda-Moura (Universidade Federal do Ceará, Fortaleza, Brazil), A Eren-Şensoy (Dr. Siyami Ersek Göğüs Kalp ve Damar Cerrahisi Eğitim ve Araştırma Hastanesi, Istanbul, Turkey), Artem Fadeev (Research Institute of Influenza, St. Petersburg, Russian Federation), Luzhao Feng (Key Laboratory of Surveillance and Early-warning on Infectious Disease, Division of Infectious Disease, Chinese Center for Disease Control and



Prevention, Beijing, China), Shuo Feng (School of Public Health, Li Ka Shing Faculty of Medicine, The University of Hong Kong, Hong Kong Special Administrative Region), Raimundo César (Ferreira de Silva Filho, Universidade Federal do Ceará, Fortaleza, Brazil), Patrícia Fisch (Hospital Nossa Senhora da Conceição, Brazil), Ekaterina Garina (D.I. Ivanovsky Institute of Virology, Moscow, Russian Federation), S Gencer (Dr. Lütfi Kırdar Kartal Training and Research Hospital, Istanbul, Turkey), Vicente Gil-Guillén (Hospital de Elda, Elda, Spain), Alexa Go (Research Institute of Influenza, St. Petersburg, Russian Federation), Vitaly Gonchar (Research Institute of Influenza, St. Petersburg, Russian Federation), Ekaterina Golovacheva (Research Institute of Influenza, St. Petersburg, Russian Federation), Mikhail Grudin (Research Institute of Influenza, St. Petersburg, Russian Federation), M Hacimustafaoğlu (Uludağ University, Bursa, Turkey), S Hancerli (Istanbul Faculty of Medicine, Istanbul University, Istanbul, Turkey), Martina Havlickova (National Institute of Public Health, Prague, Czech Republic), Kristyna Hermannova (Hospital Na Bulovce, Prague, Czech Republic), L Huang (Ningbo Women and Children Hospital, Ningbo, China), Hui Jiang (Key Laboratory of Surveillance and Early-warning on Infectious Disease, Division of Infectious Disease, Chinese Center for Disease Control and Prevention, Beijing, China), Dennis Ip (School of Public Health, Li Ka Shing Faculty of Medicine, The University of Hong Kong, Hong Kong Special Administrative Region), Helena Jirincova (National Institute of Public Health, Prague, Czech Republic), Lucie Jurzykowska (National Institute of Public Health, Prague, Czech Republic), Lidiya Kisteneva (D.I. Ivanovsky Institute of Virology, Moscow, Russian Federation), Ludmila Kolobukhina (D.I. Ivanovsky Institute of Virology, Moscow, Russian Federation), Andrey Komissarov (Research Institute of Influenza, St. Petersburg, Russian Federation), Radka Kralova (National Institute of Public Health, Prague, Czech Republic), Kirill Krasnoslobotsev (D.I. Ivanovsky Institute of Virology, Moscow, Russian Federation), Jan Kyncl (National Institute of Public Health, Prague, Czech Republic), Xavier Labrador (FISABIO-Salud Pública, Valencia, Spain and Consorcio de Investigación Biomédica de Epidemiología y Salud Pública, Instituto Carlos III, Madrid, Spain), Chao Li (Huairou District Center for Diseases Prevention and Control, Beijing, China), Xiangxin Li (Chanping District Hospital, Beijing, China), Ramón Limón-Ramírez (Hospital de la Plana, Vila-real, Spain), Jianhua Liu (The First Hospital in Huairou District, Beijing, China), Mari Carmen Llopis Garcia, FISABIO-Salud Pública, Valencia, Spain), Cédric Mahé (SANOFI Pasteur, Lyon, France), Zdenka Mandakova (National Institute of Public Health, Prague, Czech Republic), L Merkulova (D.I. Ivanovsky Institute of Virology, Moscow, Russian Federation), Sevim Mese (Istanbul University, Istanbul, Turkey), Ainara Mira Iglesias (FISABIO-Salud Pública, Valencia, Spain), Evgenia Mukasheva (D.I. Ivanovsky Institute of Virology, Moscow, Russian Federation), Angels Natividad Sancho (FISABIO-Salud Pública, Valencia, Spain), Lucia Nováková (Hospital Na Bulovce, Prague, Czech Republic), Elena Obraztsova (Research Institute of Influenza, St. Petersburg, Russian Federation), Ludmila Osidak (Research Institute of Influenza, St. Petersburg, Russian Federation), Maria del Carmen Otero-Reigada Hospital Universitario y Politécnico La Fe, Valencia, Spain), S Özer (Dr. Lütfi Kırdar Kartal Training and Research Hospital, Istanbul, Turkey), L Ozisik (Hacettepe University, Ankara, Turkey), Valentina Picot (Fondation Mérieux, Lyon, France), Maria Pisarev (Research Institute of Influenza, St. Petersburg, Russian Federation), Florence Pradel (Fondation Mérieux, Lyon, France), Jitka Prochazkova (National Institute of Public Health, Prague, Czech Republic), Joan Puig-Barberá (FISABIO-Salud Pública, Valencia, Spain), Ying Qin (Key Laboratory of Surveillance and Early-warning on Infectious Disease, Division of Infectious Disease, Chinese Center for Disease Control and Prevention, Beijing, China), Sonia Raboni (Hospital de Clínicas/Universidade Federal do Paraná, Curitiba, Brazil), Hana Roháčová (Hospital Na Bulovce, Prague, Czech Republic), Elena Rozhkova (Research Institute of Influenza, St. Petersburg, Russian Federation), Sa Li (Key Laboratory of Surveillance and Early-warning on Infectious Disease, Division of Infectious Disease, Chinese Center for Disease Control and Prevention, Beijing, China), MI Sadikhova (Research Institute of Influenza, St. Petersburg, Russian Federation), Germán Schwarz-Chavarri (Hospital General de Alicante, Alicante, Spain), Marilda Siqueira (FIOCRUZ, Brazil), Elizaveta Smorodintseva (Research Institute of Influenza, St. Petersburg, Russian Federation), Anna Sominina (Research Institute of Influenza, St. Petersburg, Russian Federation), Kirill Stolyarov (Research Institute of Influenza, St. Petersburg, Russian Federation), Vera Sukhovetskaya (Research Institute of Influenza, St. Petersburg, Russian Federation), G Sun (Beijing Huairou Hospital, Beijing, China), Y Tang (Changping District Center for Diseases Prevention and Control, Beijing, China), Miguel Tortajada-Girbés (Hospital Doctor Peset, Valencia, Spain), Svetlana Trushakova (D.I. Ivanovsky Institute of Virology, Moscow, Russian Federation), José Tuells (Hospital Universitario

del Vinalopó, Elche, Spain), Tatiana Tumina (Research Institute of Influenza, St. Petersburg, Russian Federation), R Vartanyan (D.I. Ivanovsky Institute of Virology, Moscow, Russian Federation), Lubov Voloshuk (Research Institute of Influenza, St. Petersburg, Russian Federation), Quanyi Wang (Beijing Center for Disease Prevention and Control, Beijing, China), D Wen (Huzhou Center for Diseases Prevention and Control, Huzhou, China), Peng Wu (School of Public Health, Li Ka Shing Faculty of Medicine, University of Hong Kong, Hong Kong Special Administrative Region), Wen Xiao (The First Hospital in Huairou District, Beijing, China), Peng Yang (Beijing Center for Disease Prevention and Control, Beijing, China), Marina Yanina (Research Institute of Influenza, St. Petersburg, Russian Federation), Bo Yi (Ningbo Center for Diseases Prevention and Control, Ningbo, China), Hongjie Yu (Key Laboratory of Surveillance and Early-warning on Infectious Disease, Division of Infectious Disease, Chinese Center for Disease Control and Prevention, Beijing, China), Kubra Yurtcu (National Influenza Reference Laboratory Capa-Istanbul, Istanbul, Turkey), Pavel Zarishnyuk (Research Institute of Influenza, St. Petersburg, Russian Federation), S Zhang (The Third Hospital of Yinzhou District, Ningbo, China), Yi Zhang (Beijing Center for Disease Prevention and Control, Beijing, China), Tiebiano Zhang (The First Hospital in Huairou District, Beijing, China), Jiandong Zheng (Key Laboratory of Surveillance and Early-warning on Infectious Disease, Division of Infectious Disease, Chinese Center for Disease Control and Prevention, Beijing), Zhibin Peng (Key Laboratory of Surveillance and Early-warning on Infectious Disease, Division of Infectious Disease, Chinese Center for Disease Control and Prevention, Beijing, China).

#### Funding

The study and its publication was funded by Sanofi Pasteur and the participating institutions.

#### Availability of data and materials

The datasets supporting the conclusions of this article are included within the article and its appendices.

#### Authors' contributions

All authors participated in the collection and analysis of data, preparation of the manuscript, and approval of the final version.

#### Competing interests

The authors' institutions received funding from Sanofi Pasteur for the conduct of this trial. The authors declare no other competing interests related to this article.

#### Ethics approval and consent to participate

The protocol used by the GHSN was approved by each site's Ethics Research Committee. All patients provided written informed consent.

#### Author details

<sup>1</sup>Foundation for the Promotion of Health and Biomedical Research in the Valencia Region FISABIO – Public Health, Avda Catalunya 21, 46020 Valencia, Spain. <sup>2</sup>D.I. Ivanovsky Institute of Virology FGBC “N.F. Gamaleya FRCEM” Ministry of Health of Russian Federation, Moscow, Russian Federation, Russia. <sup>3</sup>Division of Infectious Disease, Key Laboratory of Surveillance and Early-Warning on Infectious Disease, Chinese Center for Disease Control and Prevention, Beijing, China. <sup>4</sup>School of Public Health, Li Ka Shing Faculty of Medicine, The University of Hong Kong, Hong Kong, Special Administrative Region, China. <sup>5</sup>National Influenza Reference Laboratory, Istanbul Faculty of Medicine, Istanbul University, Istanbul, Turkey. <sup>6</sup>National Institute of Public Health (NIPH), Prague, Czech Republic. <sup>7</sup>Research Institute of Influenza, Saint Petersburg, Russian Federation, Russia.

Published: 22 August 2016

#### References

- Lee N, Chan PK, Lui GC, Wong BC, Sin WW, Choi KW, et al. Complications and outcomes of pandemic 2009 Influenza A (H1N1) virus infection in hospitalized adults: how do they differ from those in seasonal influenza? *J Infect Dis.* 2011;203:1739–47.
- Jernigan DB, Cox NJ. Human influenza: One health, one world. In: Webster RG, Monto AS, Braciale TJ, Lamb RA, editors. *Textbook of influenza*. Chichester, West Sussex: Wiley Blackwell; 2013. p. 3–19.



3. Hayward AC, Fragaszy EB, Bermingham A, Wang L, Copas A, Edmunds WJ, et al. Comparative community burden and severity of seasonal and pandemic influenza: results of the Flu Watch cohort study. *Lancet Respir Med.* 2014;2:445–54.
4. World Health Organization. Vaccines against influenza WHO position paper - November 2012. *Wkly Epidemiol Rec.* 2012;87:461–76.
5. Puig-Barbera J, Tormos A, Somnina A, Burtseva E, Launay O, Ciblak MA, et al. First-year results of the Global Influenza Hospital Surveillance Network: 2012–2013 Northern hemisphere influenza season. *BMC Public Health.* 2014;14:564.
6. Ortiz JR, Sotomayor V, Uez OC, Oliva O, Bettels D, McCarron M, et al. Strategy to enhance influenza surveillance worldwide. *Emerg Infect Dis.* 2009;15:1271–8.
7. Puig-Barbera J, Tormos A, Trushakova S, Somnina A, Pisareva M, Ciblak MA, et al. The Global Influenza Hospital Surveillance Network (GIHSN): A new platform to describe the epidemiology of severe influenza. *Influenza Other Respir Viruses.* 2015;9:277–86.
8. Puig-Barbera J, Natividad-Sancho A, Launay O, Burtseva E, Ciblak MA, Tormos A, et al. 2012–2013 Seasonal influenza vaccine effectiveness against influenza hospitalizations: results from the global influenza hospital surveillance network. *PLoS One.* 2014;9:e100497.
9. Puig-Barbera J, Natividad-Sancho A, Trushakova S, Somnina A, Pisareva M, Ciblak MA, et al. Epidemiology of Hospital Admissions with Influenza during the 2013/2014 Northern Hemisphere Influenza Season: Results from the Global Influenza Hospital Surveillance Network. *PLoS One.* 2016;11:e0154970.
10. Kirkwood BR, Sterne JAC. Analysis of clustered data. In: *Essential medical statistics*. edn. Malden: Blackwell Science; 2003. p. 355–70.
11. Higgins JP, Thompson SG. Quantifying heterogeneity in a meta-analysis. *Stat Med.* 2002;21:1539–58.
12. Higgins JP, Thompson SG, Deeks JJ, Altman DG. Measuring inconsistency in meta-analyses. *BMJ.* 2003;327:557–60.
13. World Health Organization. Review of the 2014–2015 influenza season in the northern hemisphere. *Wkly Epidemiol Rec.* 2015;90:281–96.
14. Barr IG, Vijaykrishna D, Sullivan SG. Differential age susceptibility to influenza B/Victoria lineage viruses in the 2015 Australian influenza season. *Euro Surveill.* 2016;21. pii: 19692.
15. Reed C, Chaves SS, Perez A, D'Mello T, Daily Kirley P, Aragon D, et al. Complications among adults hospitalized with influenza: a comparison of seasonal influenza and the 2009 H1N1 pandemic. *Clin Infect Dis.* 2014;59:166–74.
16. Van Kerkhove MD, Vandemaele KA, Shinde V, Jaramillo-Gutierrez G, Koukounari A, Donnelly CA, et al. Risk factors for severe outcomes following 2009 influenza A (H1N1) infection: a global pooled analysis. *PLoS Med.* 2011;8:e1001053.
17. Chaves SS, Aragon D, Bennett N, Cooper T, D'Mello T, Farley M, et al. Patients hospitalized with laboratory-confirmed influenza during the 2010–2011 influenza season: exploring disease severity by virus type and subtype. *J Infect Dis.* 2013;208:1305–14.
18. Dao CN, Kamimoto L, Nowell M, Reingold A, Gershman K, Meek J, et al. Adult hospitalizations for laboratory-positive influenza during the 2005–2006 through 2007–2008 seasons in the United States. *J Infect Dis.* 2010;202:881–8.
19. Wong JY, Kelly H, Cheung CM, Shiu EY, Wu P, Ni MY, et al. Hospitalization Fatality Risk of Influenza A(H1N1)pdm09: A Systematic Review and Meta-Analysis. *Am J Epidemiol.* 2015;182:294–301.
20. Skowronski DM, Chambers C, Sabaiduc S, De Serres G, Dickinson JA, Winter AL, et al. Interim estimates of 2014/15 vaccine effectiveness against influenza A(H3N2) from Canada's Sentinel Physician Surveillance Network, January 2015. *Euro Surveill.* 2015;20. pii: 21022.
21. Flannery B, Clippard J, Zimmerman RK, Nowalk MP, Jackson ML, Jackson LA, et al. Early estimates of seasonal influenza vaccine effectiveness - United States, January 2015. *MMWR Morb Mortal Wkly Rep.* 2015;64:10–5.
22. Puig-Barbera J, Mira-Iglesias A, Tortajada-Girbes M, Lopez-Labrador FX, Belenguera-Varea A, Carballido-Fernandez M, et al. Effectiveness of influenza vaccination programme in preventing hospital admissions, Valencia, 2014/15 early results. *Euro Surveill.* 2015;20. pii: 21044.
23. World Health Organization. Recommended composition of influenza virus vaccines for use in the 2015–2016 northern hemisphere influenza season. *Wkly Epidemiol Rec.* 2015;90:97–108.
24. Castilla J, Navascues A, Fernandez-Alonso M, Reina G, Pozo F, Casado I, et al. Effectiveness of subunit influenza vaccination in the 2014–2015 season and residual effect of split vaccination in previous seasons. *Vaccine.* 2016;34:1350–7.
25. Ohmit SE, Petrie JG, Malosh RE, Fry AM, Thompson MG, Monto AS. Influenza vaccine effectiveness in households with children during the 2012–2013 season: assessments of prior vaccination and serologic susceptibility. *J Infect Dis.* 2015;211:1519–28.
26. Smith DJ, Forrest S, Ackley DH, Perelson AS. Variable efficacy of repeated annual influenza vaccination. *Proc Natl Acad Sci U S A.* 1999;96:14001–6.
27. Sullivan SG, Tay EL, Kelly H. Variable definitions of the influenza season and their impact on vaccine effectiveness estimates. *Vaccine.* 2013;31:4280–3.
28. Foppa IM, Haber M, Ferdinands JM, Shay DK. The case test-negative design for studies of the effectiveness of influenza vaccine. *Vaccine.* 2013;31:3104–9.
29. Rothman KJ, Greenland S, Lash TL. Validity in epidemiological studies. In: *Modern Epidemiology*. Philadelphia: Wolters Kluwer Health/Lippincott Williams & Wilkins; 2008. p. 128–47.
30. Ortiz JR, Neuzil KM, Rue TC, Zhou H, Shay DK, Cheng PY, et al. Population-based incidence estimates of influenza-associated respiratory failure hospitalizations, 2003 to 2009. *Am J Respir Crit Care Med.* 2013;188:710–5.
31. Chan PK, Chan MC, Cheung JL, Lee N, Leung TF, Yeung AC, et al. Influenza B lineage circulation and hospitalization rates in a subtropical city, Hong Kong, 2000–2010. *Clin Infect Dis.* 2013;56:677–84.
32. Ortiz JR, Neuzil KM, Shay DK, Rue TC, Neradilek MB, Zhou H, et al. The burden of influenza-associated critical illness hospitalizations. *Crit Care Med.* 2014;42:2325–32.
33. Cohen C, Walaza S, Moyes J, Groome M, Tempia S, Pretorius M, et al. Epidemiology of severe acute respiratory illness (SARI) among adults and children aged  $\geq 5$  years in a high HIV-prevalence setting, 2009–2012. *PLoS One.* 2015;10:e0117716.

Submit your next manuscript to BioMed Central and we will help you at every step:

- We accept pre-submission inquiries
- Our selector tool helps you to find the most relevant journal
- We provide round the clock customer support
- Convenient online submission
- Thorough peer review
- Inclusion in PubMed and all major indexing services
- Maximum visibility for your research

Submit your manuscript at  
[www.biomedcentral.com/submit](http://www.biomedcentral.com/submit)

