



Global Influenza
Hospital Surveillance
Network



THE FOUNDATION FOR INFLUENZA EPIDEMIOLOGY



**Foundation for
Influenza
Epidemiology**

Sous l'égide de

**Fondation
de
France**

GOVERNANCE PRINCIPLES

Creation of a **dedicated fund** in 2015 under the *Fondation de France* aegis: **Fondation for Influenza Epidemiology**

Governance

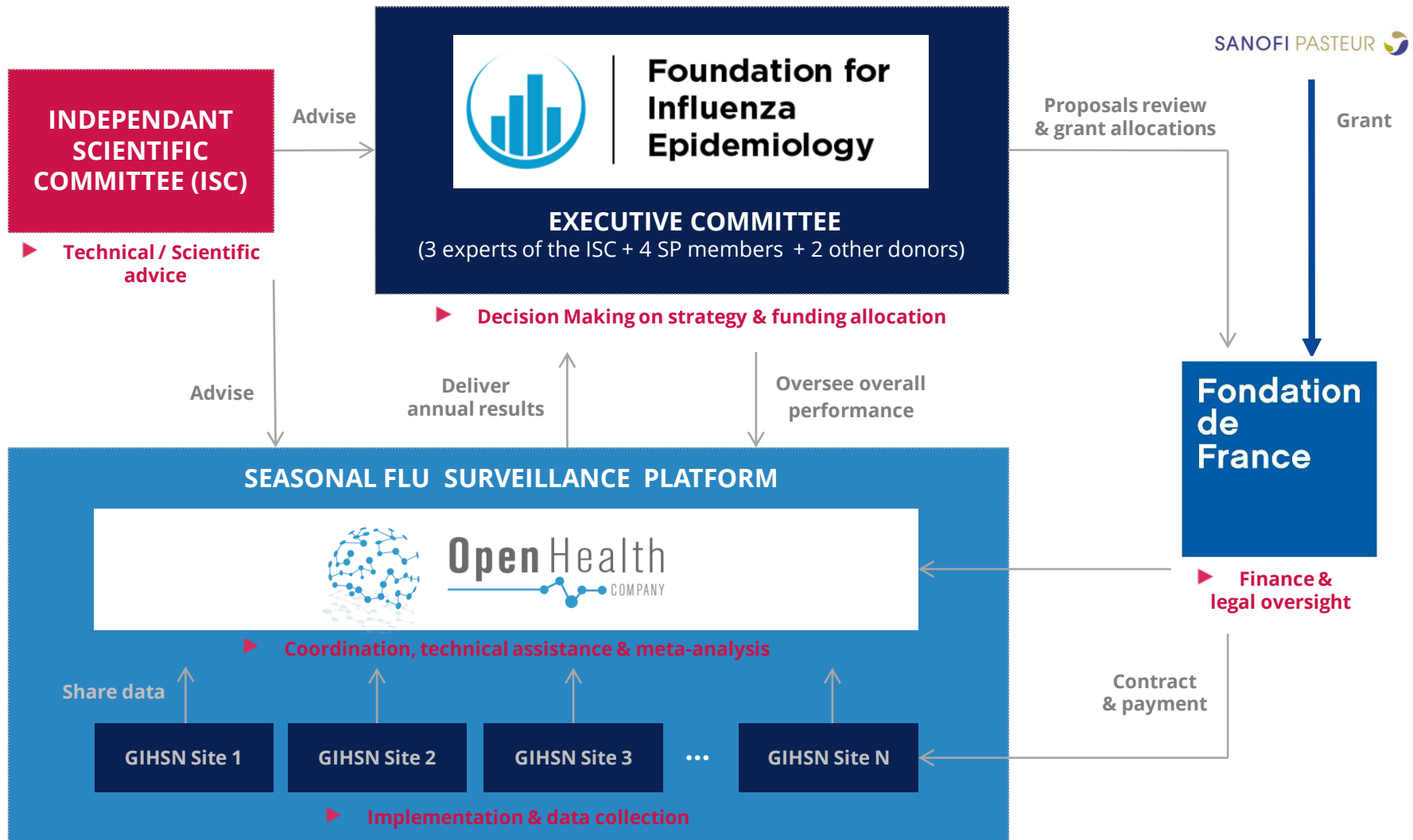
- Funding is allocated to sites through a yearly call for tender
- Selection is based on geography, capacity, alignment with national surveillance systems, level of co-funding

Key principles

- Applicants must be non-for-profit institutions
- Data is owned by sites. **SP has not access to the data**
- Technical assistance is provided by an external coordinating partner (operational budget of the Foundation)
- Sites are invited to share their data to the coordinating partner to produce the pooled analysis for the annual meeting. They take part in the analysis, interpretation of results and publication



THE GIHSN GOVERNANCE



THE INDEPENDENT SCIENTIFIC COMMITTEE

Provides recommendations for technical, scientific and related ethical aspects of the project

- Contributes to, reviewing and advising on the scientific deliverables such as the protocol, analyses, interpretation of results, report(s), scientific communication and publications
- Advises the decision maker on technical and scientific topics and provides specific recommendations

Composition

Independent experts

- Jill Ferdinands (US CDC)
- Feng Luzhao (China CDC)
- Bobby Reiner (IHME, USA)
- Bruno Lina (University of Lyon)
- Philip Beutels (University of Antwerp)
- Justin Ortiz (University of Maryland)
- Allen Cheng (Flu Can Network, Australia)

Investigators

- Elena Burtseva (Moscow)
- Marta Nunes (South Africa)
- Melissa Andrew (Canada)

- Secretariat is managed by OpenHealth Company



OPENHEALTH COORDINATION ROLE

The responsibilities of the coordination and support provider are split into 4 main areas :

1. Operational coordination
2. Collection and analysis of data
3. Scientific coordination and support
4. Strategic project steering support

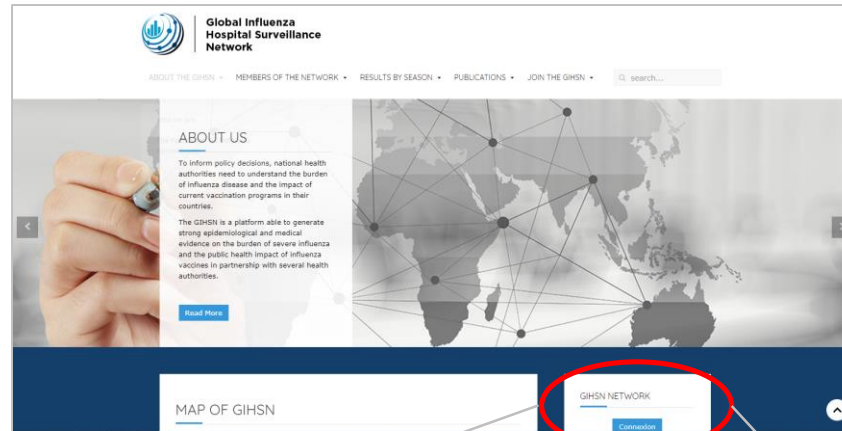


Open Health
COMPANY

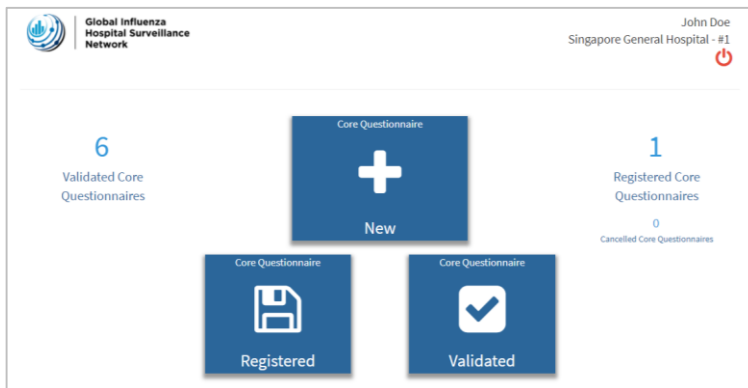


IMPLEMENTATION OF 2 NEW TOOLS TO SIMPLIFY AND STREAMLINE DATA COLLECTION AND PROCESSING

1 | IMPROVED GIHSN HOME PAGE



2 | ONLINE DATA COLLECTION



3 | REALTIME DATA VISUALIZATION

